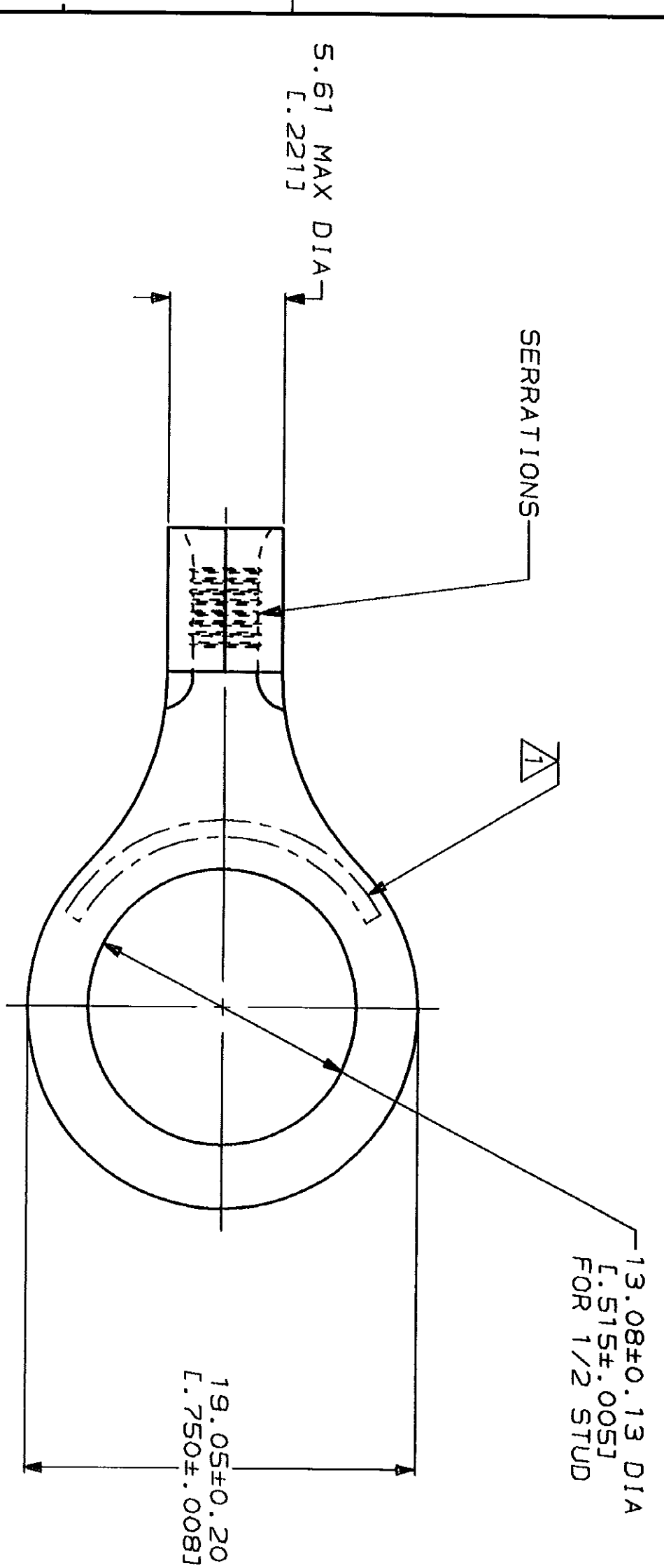


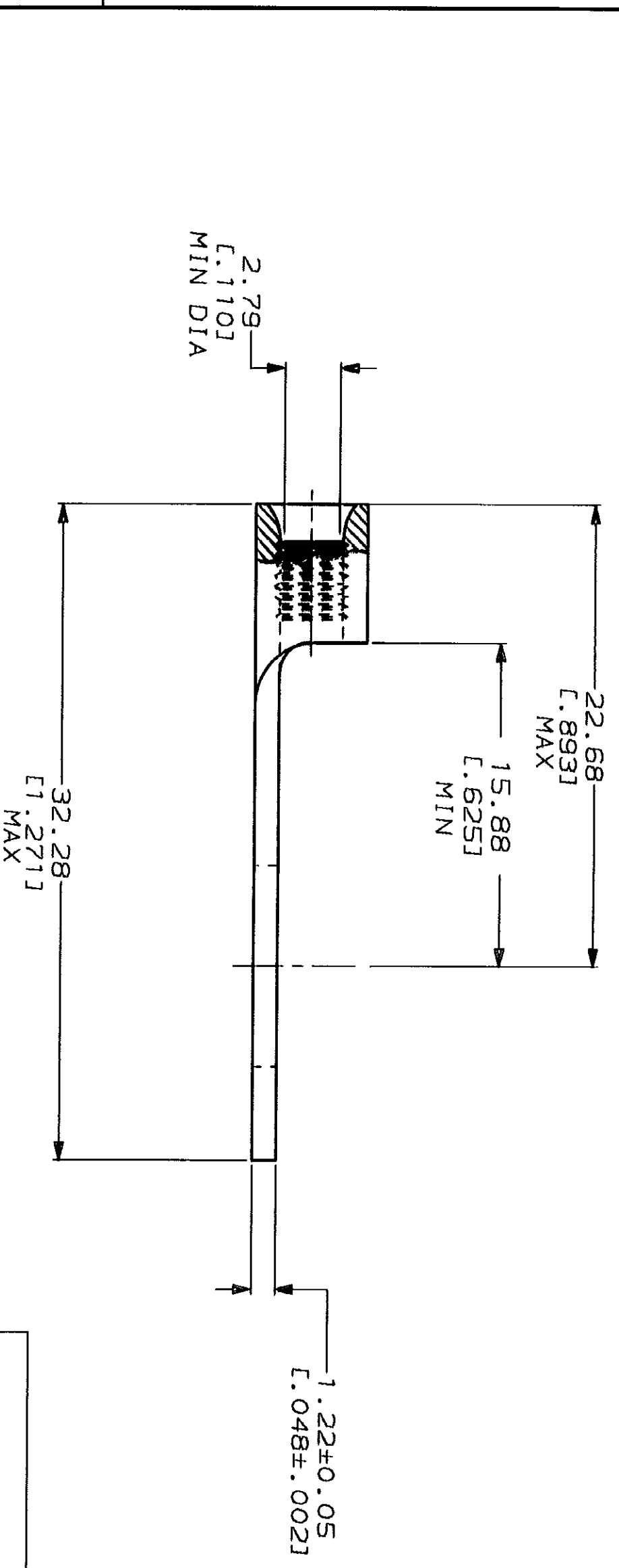
LOC	DIST	REV	DESCRIPTION	DATE	APPD
G	14	P	REV & REDRAWN PER 0720-0008-93	2-1-93	JBD

METPRIG
 DIMENSIONS LISTED IN MM [INCHES]



AMP WIRE RANGE	UL E13288 Listed
16-14HD AWG STRANDED	16-14HD AWG STRANDED
LR7189 Certified	MILITARY P/N AND CLASS
NOT CERTIFIED	NOT APPLICABLE

△ STAMP AMP 16-14HD* APPROX AS SHOWN



**AMP INCORPORATED
 CUSTOMER SERVICE SYSTEMS**

FOR ADDITIONAL
 PRODUCT INFORMATION OR
 COPIES OF DRAWINGS
 AND TECHNICAL DOCUMENTS
 1-800-522-6752

FOR APPLICATION
 TOOLING INFORMATION
 1-800-722-1111

FOR ORDER ENTRY
 1-800-526-5142

MAX RECOMMENDED OPERATING
 TEMPERATURE:
 170°C MAX

VOLTAGE RATING:
 NOT APPLICABLE

WIRE CROSS SECTIONAL AREA RANGE:
 1.04-2.62mm² [2,050-5,180] CIR MILS
 STRANDED

DO NOT SCALE PRINT.
 UNLESS SPECIFIED
 DIMENSIONS IN mm - FINEST
 TOLERANCES ON:
 2 PLC DEC ±
 3 PLC DEC ±

MATERIAL
 COPPER PER
 ASTM B-152
 ANNEALED

FINISH
 TIN PLATE
 0.00254 [0.00100] MIN
 THK PER MIL-T-10727

DR 2-1-93 TA BRINKMAN
CHK 2-1-93 DA PATTERSON
APPD 2-1-93 DE MILLER
APPD 2-1-93 JL MECKLEY
PRODUCT SPEC
APPLICATION SPEC
WEIGHT

AMP
 AMP Incorporated
 Harrisburg, PA 17105-3608

TERMINAL, RING TONGUE,
 HEAVY DUTY, BUDGET

SIZE CAGE CODE DRAWING NO
 00779 G-34830