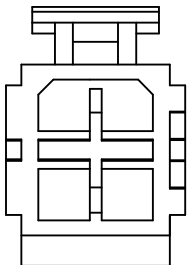
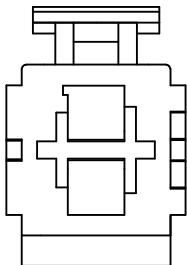
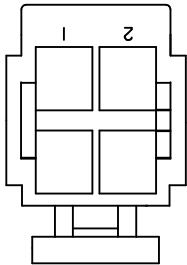
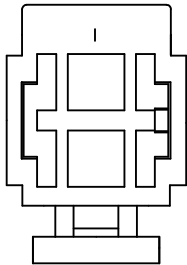


CKT. SIZE	ENG. NO.	EDP. NO.	DIM. "A"	DIM. "B"
02	30067-02A3	NOT TOOLED	—	.467 (11.86)
04	30067-04A3	I5-97-5043	.165 (4.20)	.467 (11.86)
06	30067-06A3	NOT TOOLED	.331 (8.40)	.633 (16.08)
04	30067-04B3	NOT TOOLED	.165 (4.20)	.467 (11.86)

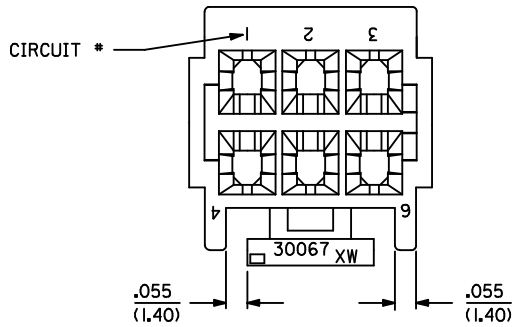
LEGEND:

30067 - ** * 3
 CIRCUIT SIZE (02-06)
 HOUSING COLOR
 A = BLACK

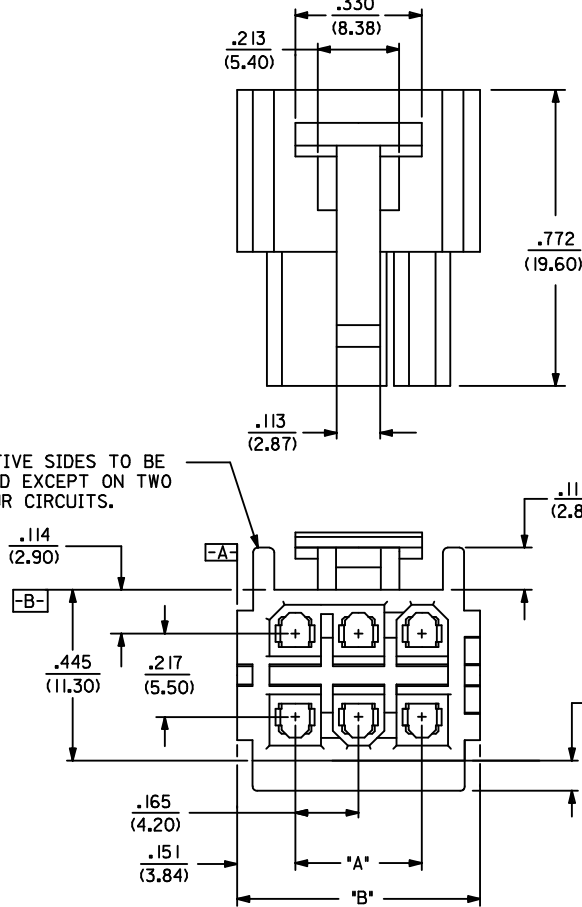


2 CKT.
(SCALE: 2X)

4 CKT.
(SCALE: 2X)

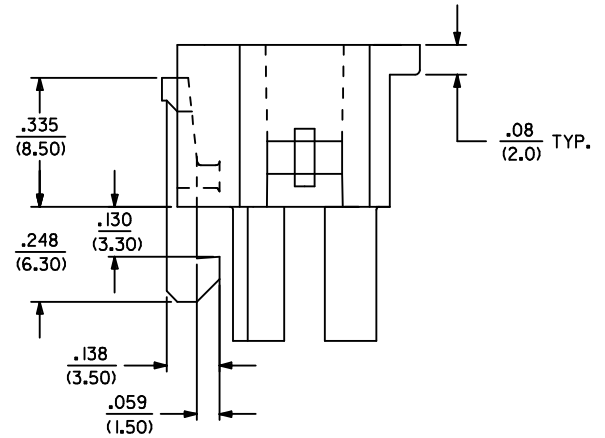


PROTECTIVE SIDES TO BE PROVIDED EXCEPT ON TWO AND FOUR CIRCUITS.



NOTES:

1. MATERIAL: UNFILLED POLYESTER, U.L. 94V-0 BLACK
2. FINISH: N/A
3. PRODUCT SPECIFICATION: PS-5556-003
4. PACKAGING SPECIFICATION: PK-30067-001
5. RECEPTACLE HOUSING TO MATE WITH PLUG HOUSING 30068, ST. HEADER 30069, AND RT ANGLE HEADERS 30070 AND 44483
6. HOUSING TO BE USED WITH TERMINAL 5556, AND T.P.A. LOCK 30072.
7. HOUSING ACCEPTS CONNECTORS POSITIONING ASSURANCE (C.P.A.) LOCK 30071.
8. PART CONFORMS TO CLASS 'B' REQUIREMENTS OF 'COSMETIC SPECIFICATION PS-45499-002.



ADDED PK-30067-001 EC NO: UCP2010-2159 DRWNG: JAGUILAR 2010/02/25 CHKD: J BELL 2010/03/08 APPR: FSM/TH 2010/03/08	QUALITY SYMBOLS	GENERAL TOLERANCES (UNLESS SPECIFIED)	DIMENSION STYLE	SCALE	DESIGN UNITS	THIRD ANGLE PROJECTION															
	$\nabla = 0$ $\nabla = 0$ $\nabla = 0$	<table border="1"> <thead> <tr> <th></th> <th>mm</th> <th>INCH</th> </tr> </thead> <tbody> <tr> <td>4 PLACES</td> <td>± .010</td> <td>± .0004</td> </tr> <tr> <td>3 PLACES</td> <td>± .010</td> <td>± .0004</td> </tr> <tr> <td>2 PLACES</td> <td>± 0.25</td> <td>± .010</td> </tr> <tr> <td>1 PLACE</td> <td>± 0.36</td> <td>± .014</td> </tr> </tbody> </table>		mm	INCH	4 PLACES	± .010	± .0004	3 PLACES	± .010	± .0004	2 PLACES	± 0.25	± .010	1 PLACE	± 0.36	± .014	IN/MM	4:1	INCH	
		mm	INCH																		
	4 PLACES	± .010	± .0004																		
3 PLACES	± .010	± .0004																			
2 PLACES	± 0.25	± .010																			
1 PLACE	± 0.36	± .014																			
REV	DESCRIPTION	APPROVED BY	DATE	TITLE 2-6 CKT. RECEPT. HOUSING MINI-FIT T.P.A. W/O SIDE TABS																	
A3		FSMR/JH	09/09/1993	MOLEX INCORPORATED																	
DRAFT WHERE APPLICABLE MUST REMAIN WITHIN DIMENSIONS			MATERIAL NO.	DOCUMENT NO.	SHEET NO.																
			SEE CHART	SD-30067-***3	1 OF 1																
THIS DRAWING CONTAINS INFORMATION THAT IS PROPRIETARY TO MOLEX INCORPORATED AND SHOULD NOT BE USED WITHOUT WRITTEN PERMISSION																					