

UEGM 40/1

Order No.: 2792112



<http://eshop.phoenixcontact.de/phoenix/treeViewClick.do?UID=2792112>

Electronic housing, for PCB insertion, fully equipped with 3 screw or 6
tab connections per side

Commercial data

EAN	4017918072582
Pack	10 pcs.
Customs tariff	85369010
Weight/Piece	0.0741 KG
Catalog page information	Page 561 (CC-2009)

Product notes

WEEE/RoHS-compliant since:
01/01/2003



[http://
www.download.phoenixcontact.com](http://www.download.phoenixcontact.com)
Please note that the data given
here has been taken from the
online catalog. For comprehensive
information and data, please refer
to the user documentation. The
General Terms and Conditions of
Use apply to Internet downloads.

Technical data

General

Housing type	Complete housing
Housing material	polyamide (PA 6.6)
Color	green

Dimensions / positions

Length	79 mm
Width	40 mm
Number of positions	6
Pitch	5 mm

Technical data

Ambient temperature (operation)	-40 °C ... 105 °C
Connection in acc. with standard	CUL
Nominal voltage U_N	300 V
Nominal current I_N	10 A
AWG/kcmil	30-12
Indicator1	CUL1
Inflammability class acc. to UL 94	V0
Power dissipation at 20°C in the horizontal mounting position	5.2 W 11.2 W

Connection data

Conductor cross section solid min.	0.2 mm ²
Conductor cross section solid max.	4 mm ²
Conductor cross section stranded min.	0.2 mm ²
Conductor cross section stranded max.	2.5 mm ²
Conductor cross section AWG/kcmil min.	24
Conductor cross section AWG/kcmil max	12
Stripping length	8 mm

Certificates / Approvals

Certification

CUL, GOST, UL

CUL

Nominal voltage U_N	300 V
Nominal current I_N	10 A
AWG/kcmil	30-12

UL

Nominal voltage U_N	300 V
Nominal current I_N	10 A
AWG/kcmil	30-12

Accessories

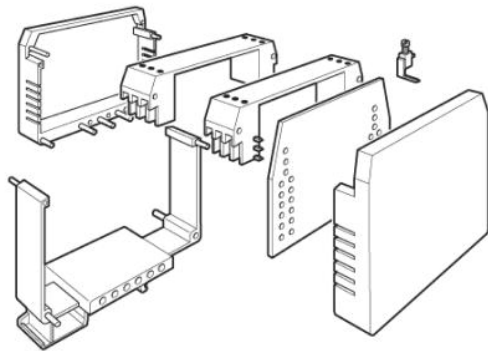
Item	Designation	Description
------	-------------	-------------

Bridges

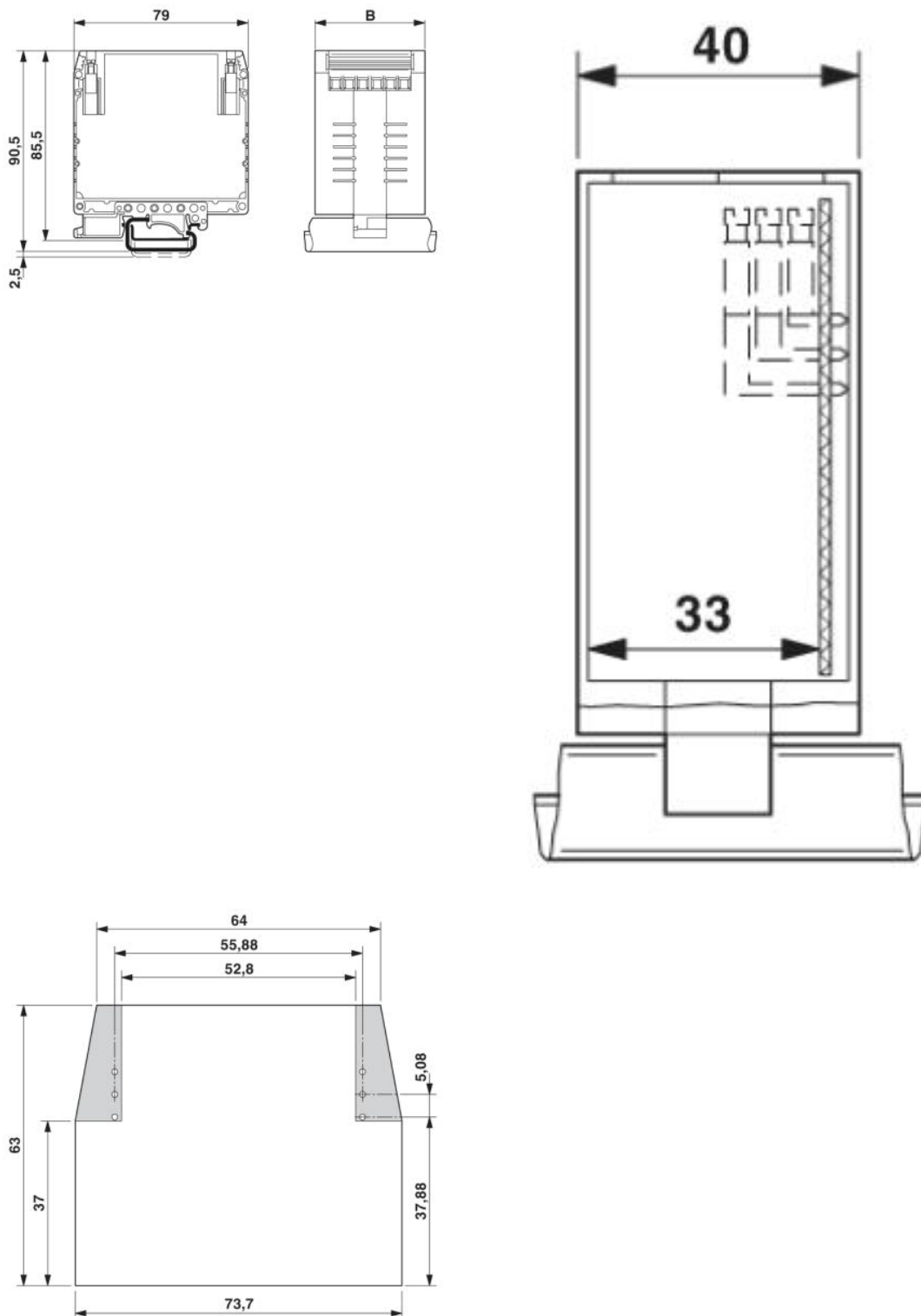
2820929	DB 50- 90 GY	Wire bridge, Color: gray
---------	--------------	--------------------------

Diagrams/Drawings

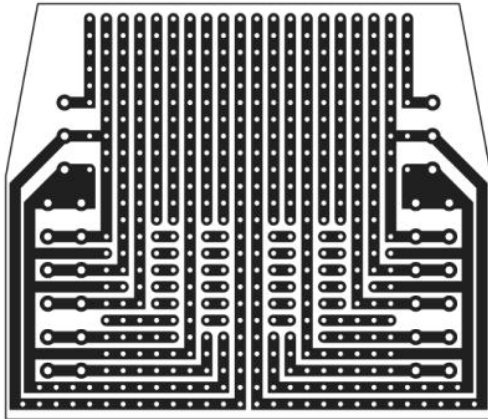
Explosion drawing



Dimensioned drawing



Schematic diagram



Address

PHOENIX CONTACT Inc., USA
586 Fulling Mill Road
Middletown, PA 17057, USA
Phone (800) 888-7388
Fax (717) 944-1625
<http://www.phoenixcon.com>



© 2010 Phoenix Contact
Technical modifications reserved;