

8 7 6 5 4 3 2 1

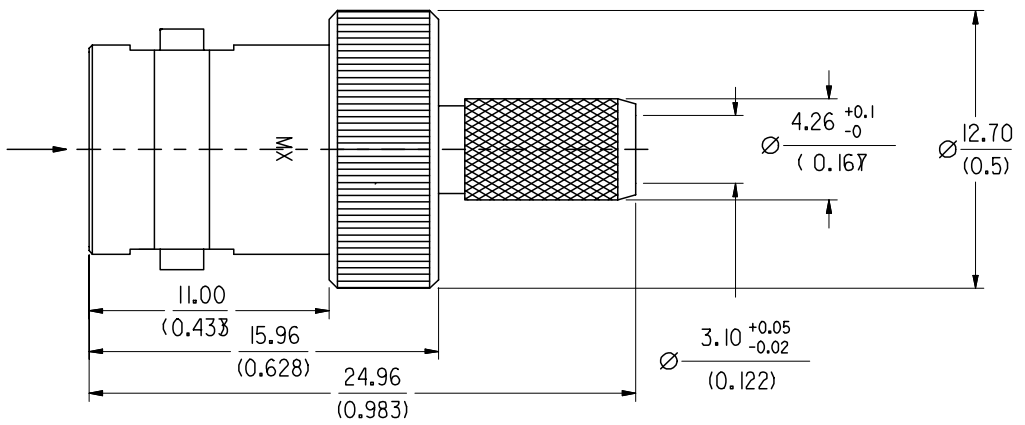
ENG. NO.

EDP NO.

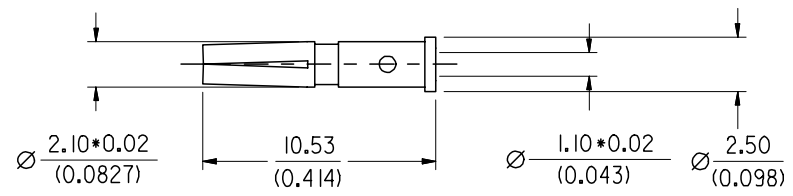
SIMILAR ITEM

PROJECT NO. _____

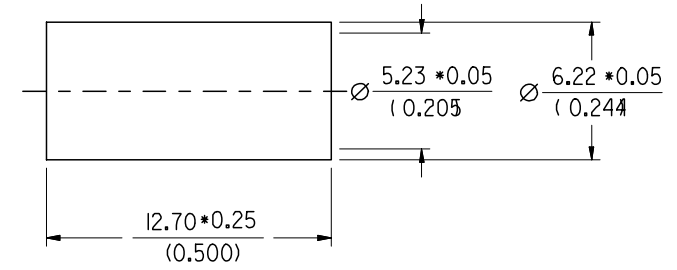
CONNECTOR INTERFACE
PER MOLEX STANDARD
ES-73599-0000



BODY ASSEMBLY



CENTER CONTACT (CAPTIVE)



FERRULE

CABLE ATTACHMENT:
INNER CONTACT -----CRIMP (1.69 HEX.)
OR SOLDER
OUTER CONDUCTOR-----CRIMP (5.41 HEX.)
ASSEMBLY INSTRUCTION--AS-73597-0031

FINISH :
CONNECTOR BODY-----NICKEL PLATING
CENTER CONTACT-----GOLD PLATING
FERRULE -----NICKEL PLATING

MECHANICAL & ELECTRICAL CHARACTERISTICS:
PER PRODUCT SPECIFICATION PS-73598-0000

CONSTRUCTION:
CONNECTOR BODY-----BRASS
DIELECTRIC-----TEFLON
CENTER CONTACT-----PHOSPHOR BRONZE
FERRULE -----BRASS

MATERIAL & FINISHES:
PER PRODUCT SPECIFICATION PS-73598-0000

PACKAGING:
INDIVIDUAL PLASTIC BAGS

				MATERIAL : SEE NOTE		 MOLEX TAIWAN LTD. (R.F. DIVISION)
				FINISH : SEE NOTE		
				SCALE : 4:1	UNIT : mm (INCH)	GENERAL TOLERANCES ANGLE : ± 3° DIM : ± .25x.010
				DRAWN BY :		DRW. NO.: SDA-73174-0193 REV A
				CHK'D BY :		TITLE : 50 OHMS BNC STRAIGHT JACK RG58C/U RG141A/U, RG303/U CRIMP/CRIMP
LTR	REVISION RECORD	ECN	DR/CHK	DATE	APPR'D BY :	
STANDARD ITEM			<input checked="" type="checkbox"/> YES	<input type="checkbox"/> NO	SHEET OF	

DO NOT SCALE DRAWING