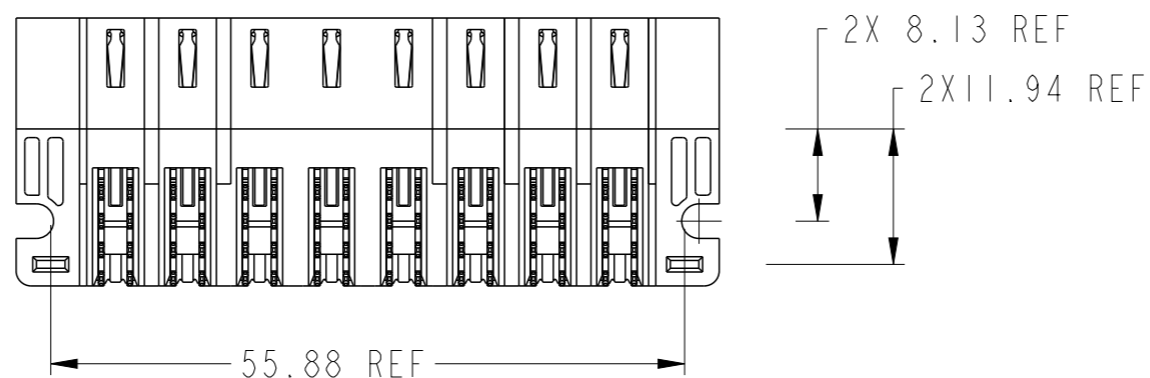
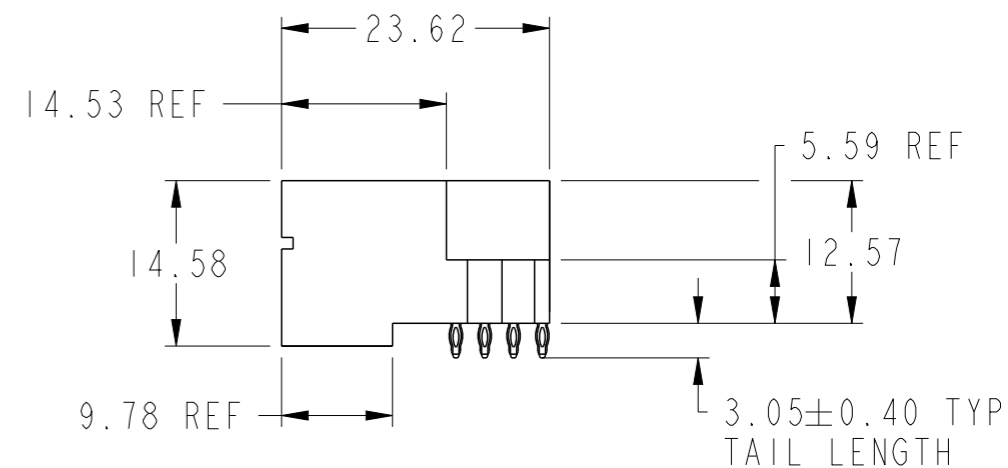
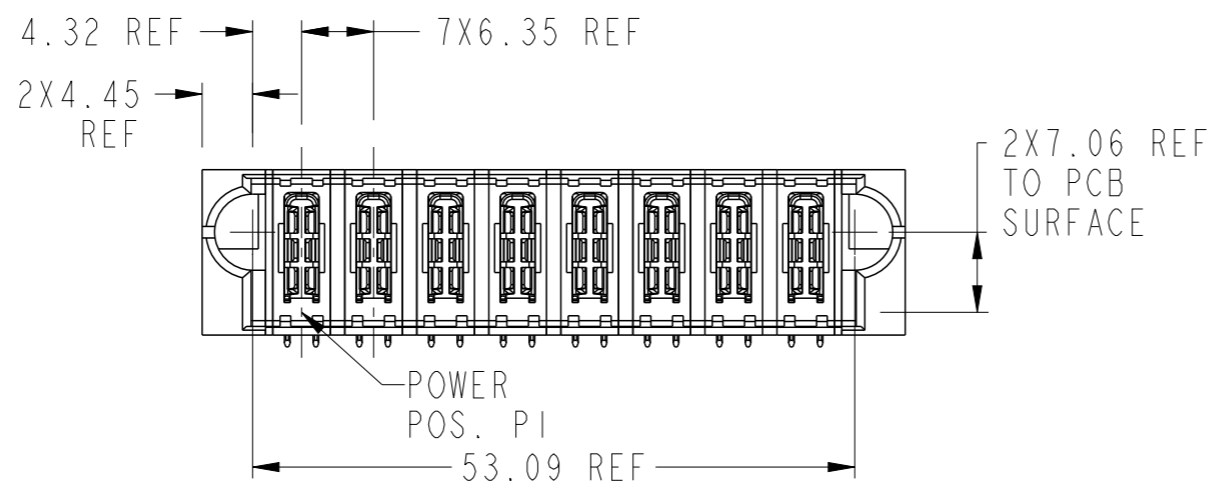
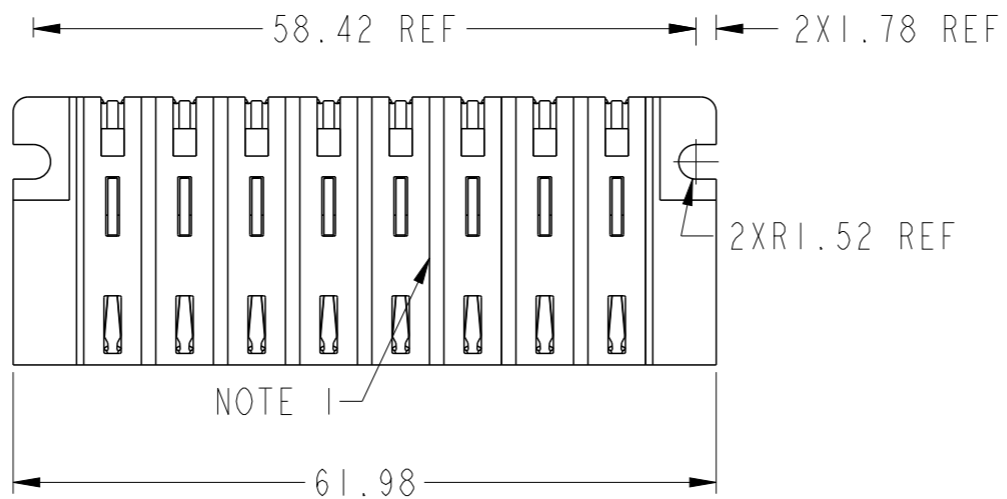
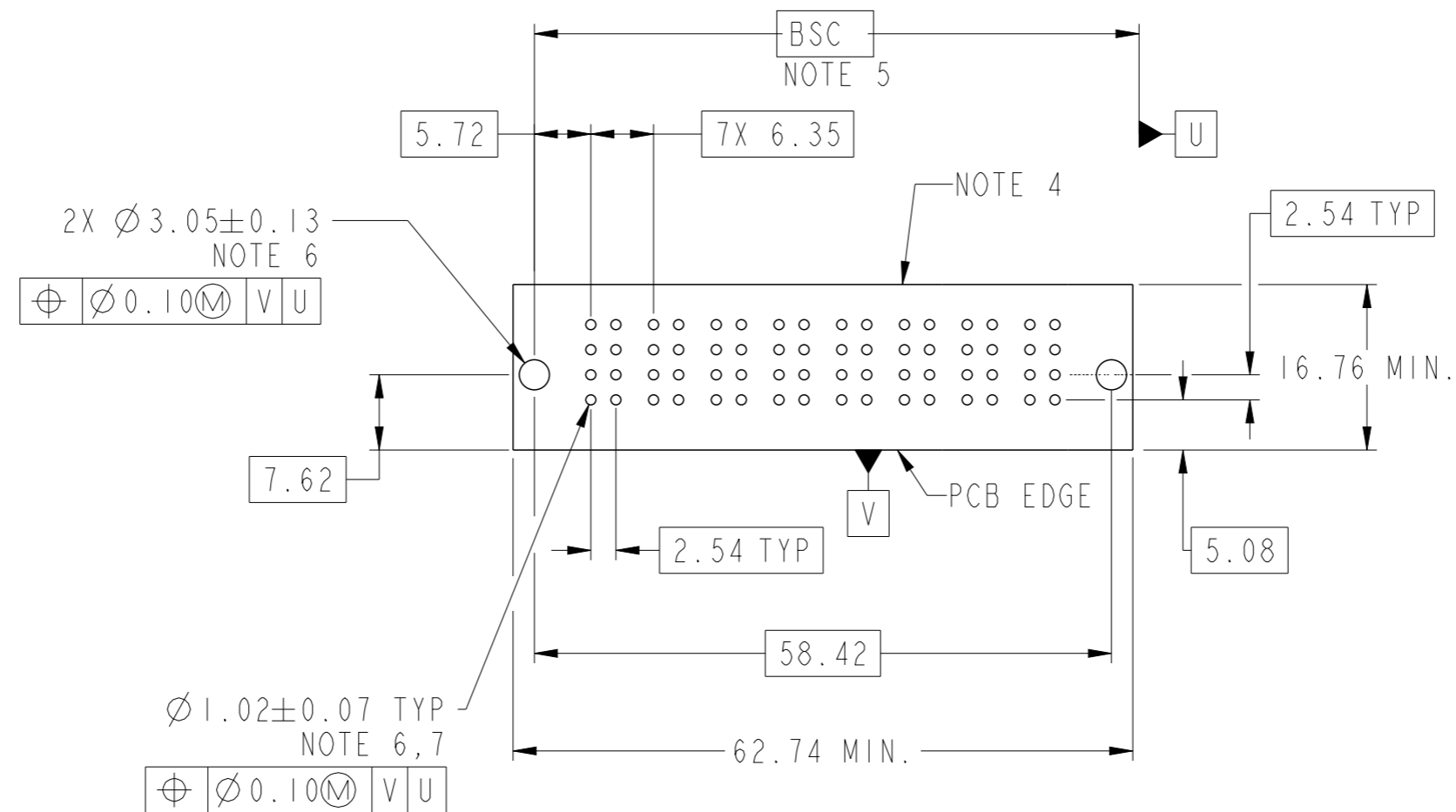


PRODUCT NUMBER SEE SHEET 2



spec ref	*	dr	Eddy Zeng	2014/01/25	projection	MM	size	A3	scale	3:2	
tolerance std	ASME Y14.5	eng	Eddy Zeng	2014/02/17			ecn no		-		
TOLERANCES UNLESS OTHERWISE SPECIFIED		chr	Li-He	2014/02/16			product family		PwrBlade+		rel level
surface	<input checked="" type="checkbox"/> linear <input type="checkbox"/> angular	appr	Pei-Ming Zheng	2014/02/17	product family		PwrBlade+		rel level		
ASME Y14.5	0.X ±0.5 0.XX ±0.25 0.XXX ±0.10 0° ±2°			title 8HP RA PF HEADER		cat. no. www.fci.com		dwg no 10106125-8000002		rev A	
Product - Customer Drw						sheet 1 of 3					

PRODUCT NO.	ROWS	HIGH POWER								E2
		E1	P1	P2	P3	P4	P5	P6	P7	
10106125-8000002LF	DCBA									



dr	Eddy Zeng	2014/01/25	projection	MM	size	A3	scale	3:2
eng	Eddy Zeng	2014/02/17		← →	ecn no	-	rel level	Released
chr	Li-He	2014/02/16						
appr	Pei-Ming Zheng	2014/02/17	product family	PwrBlade+				
			title	8HP	dwg no	10106125-8000002	rev	A
www.fci.com			cat. no.	Product - Customer Drw		sheet 2 of 3		

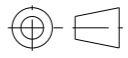
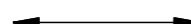

CODE	DESCRIPTION
HE	STD HIGH POWER CONTACT (3.05)

NOTES:

- 1) "FCI", PART NUMBER AND DATE CODE TO BE MARKED ON THIS SURFACE.
THE MARK CAN BE OMITTED IF THERE IS NOT ENOUGH SPACE ON THIS SURFACE.
- 2) MATERIALS:
-HOUSING - GLASS FILLED WITH HIGH TEMP THERMOPLASTIC, UL94V-0.
-SIGNAL CONTACT - COPPER ALLOY.
-POWER CONTACT - HIGH CONDUCTIVITY COPPER ALLOY.
- 3) PLATING SPECIFICATION REFER TO FCI 10116351
- 4) DENOTES CONNECTOR KEEP OUT ZONE.
- 5) DATUM AND BASIC DIMENSIONS WERE ESTABLISHED BY CUSTOMER.
- 6) ALL HOLE DIAMETERS ARE FINISHED HOLE SIZES.
- 7) 1.15 ± 0.025 MM DRILLED HOLE PLATED WITH 0.00762MM MIN Sn
OVER 0.0254-0.0762MM Cu PLATING TO ACHIEVE A 1.02 ± 0.07 MM HOLE.
- 8) PRODUCT SPECIFICATION REFER TO FCI GS-12-658.
APPLICATION SPECIFICATION REFER TO FCI GS-20-141.
PRODUCT PACKAGED IN TRAYS, REFER TO FCI GS-14-1502.



Copyright FCI.

dr	Eddy Zeng	2014/01/25	projection 	MM 	size	A3	scale	3:2
eng	Eddy Zeng	2014/02/17			ecn no	-		
chr	Li-He	2014/02/16			rel level	Released		
appr	Pei-Ming Zheng	2014/02/17	product family	PwrBlade+				
		title 8HP RA PF HEADER		dwg no 10106125-8000002	rev A			
www.fci.com		cat. no.	Product - Customer Drw		sheet 3 of 3			