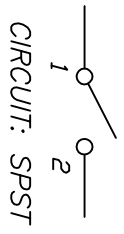
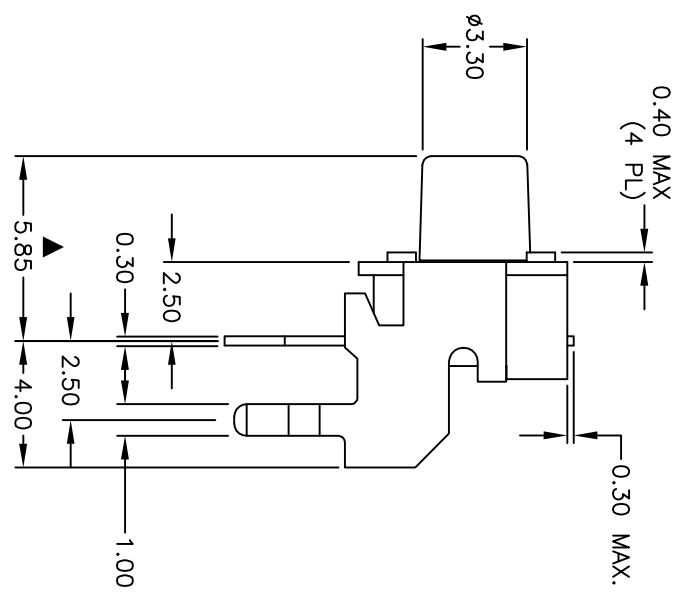
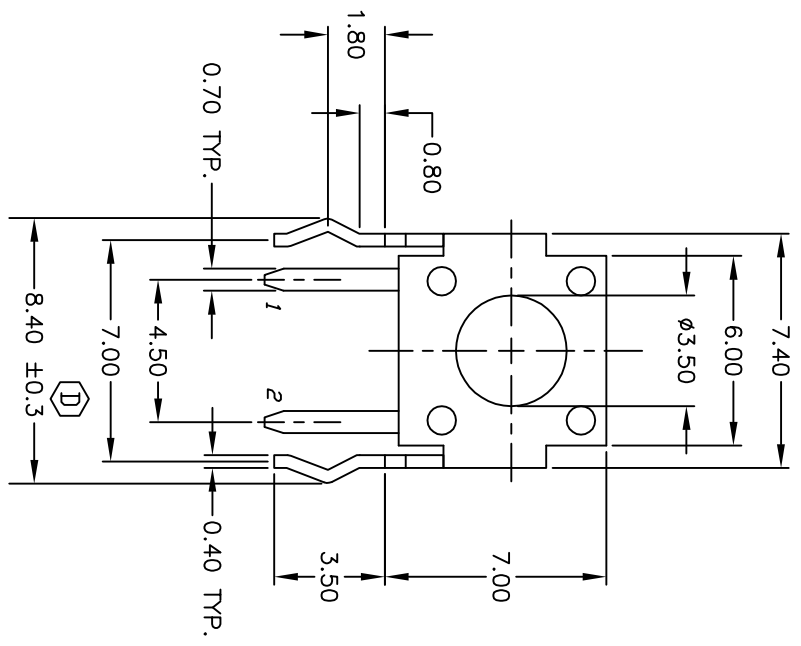


RECOMMENDED P.C.B. LAYOUT



NOTES:

1. ALL DIMENSIONS IN MM
2. GENERAL TOLERANCE: X.X=±0.4
X.XX=±0.25
3. TERM. NOS. FOR REF. ONLY
4. RATING: 50mA, @12V DC
5. TRAVEL: 0.25±0.1mm
6. OPERATING FORCE: 160±50gf
7. CONTACT RESISTANCE: 100 milliohms Max.
8. ELECTRICAL LIFE: 100,000 CYCLES MIN.
9. DESIGNATE MAJOR DIMENSIONS
10. 2002/95/EC (ROHS) COMPLIANT



D	18742	LEG TOLERANCE WAS +/-0.1	12/22/09	BLR
C	18331	REMOVED SPECIFIC RESIN INFO	11/21/08	BLR
B	11842	REVISED AND REDRAWN	11/27/01	CJB
REV.	ECN NO.	DESCRIPTION	DATE	CHKD

TITLE		TL 1105 X F160 Q (STD BRACKET)	
SCALE	DATE	DR	DWG
4:1	12/21/09	BLR	P020221
REV		D	

THE INFORMATION CONTAINED IN THIS DOCUMENT IS PROPRIETARY TO E-SWITCH AND IS NOT TO BE COPIED OR TRANSFERRED