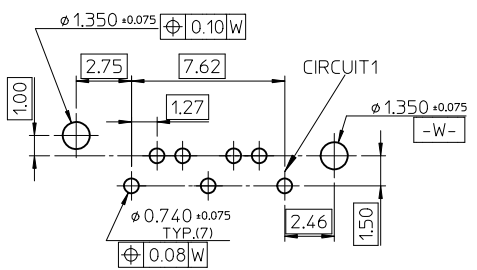
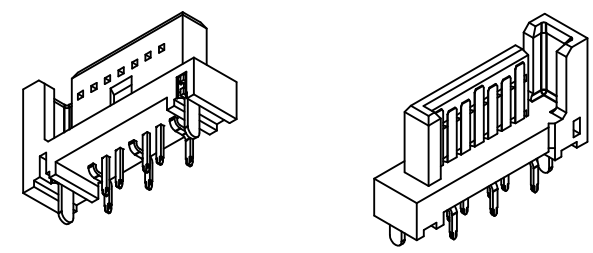
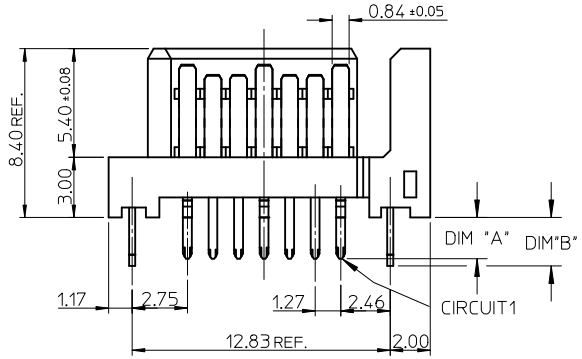
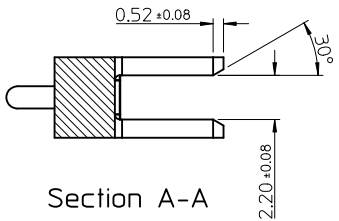
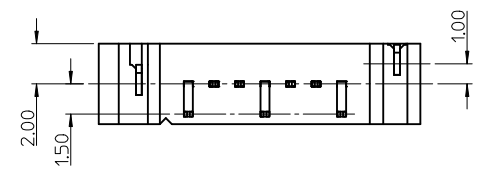
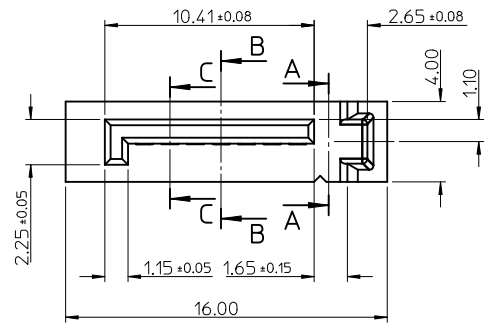
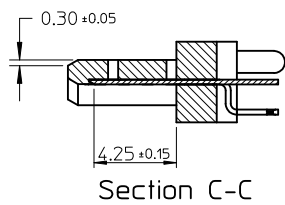


- NOTES:
- MATERIAL:
 - HOUSING: SEE TABLE, UL94V-0, COLOR: BLACK OR BULE (SEE P/N TABLE)
 - TERMINAL/PEG: COPPER ALLOY
 - TERMINAL PLATING :
 - CONTACT AREA: GOLD PLATED
 - SOLDER TAIL: 1.27 MICRON MIN. TIN PLATED
 - UNDER PLATE: 1.27 MICRON MIN. NICKEL PLATED
 - PEG PLATING:
 - 1.27 MICRON MIN. TIN PLATED
 - OVERALL 1.27 MICRON MIN. NICKEL UNDER PLATED
 - PACKAGING SPECIFICATION REFER TO PK-67491-001
 - PRODUCT SPECIFICATION REFER TO PS-67491-001
 - MATING PART: 67489
 - RECOMMENDED PROCESS: WAVE SOLDERING
 - PRODUCT COMPLIANT TO RoHS DIRECTIVE 2002/95/EC AND ELV DIRECTIVE 2000/53/EC*



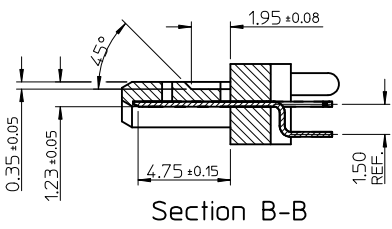
RECOMMENDED P.C.B. LAYOUT t=1.6mm OR 2.0mm

OBSELETE PARTS EC NO: SH2012-0231 DRWING: GLLI 2012/01/18 CHKD: XQZHANG 2012/01/18 APPR: AYIN 2012/01/20	QUALITY SYMBOLS $F_A = 0$ $F_C = 0$ $F_P = 0$	GENERAL TOLERANCES (UNLESS SPECIFIED) <table border="1"> <thead> <tr> <th></th> <th>mm</th> <th>INCH</th> </tr> </thead> <tbody> <tr> <td>4 PLACES</td> <td>± ---</td> <td>± ---</td> </tr> <tr> <td>3 PLACES</td> <td>± ---</td> <td>± ---</td> </tr> <tr> <td>2 PLACES</td> <td>± 0.15</td> <td>± ---</td> </tr> <tr> <td>1 PLACE</td> <td>± 0.25</td> <td>± ---</td> </tr> </tbody> </table> ANGULAR ± 3 °		mm	INCH	4 PLACES	± ---	± ---	3 PLACES	± ---	± ---	2 PLACES	± 0.15	± ---	1 PLACE	± 0.25	± ---	DIMENSION STYLE MM ONLY	SCALE 4:1	DESIGN UNITS METRIC	THIRD ANGLE PROJECTION
		mm	INCH																		
	4 PLACES	± ---	± ---																		
	3 PLACES	± ---	± ---																		
2 PLACES	± 0.15	± ---																			
1 PLACE	± 0.25	± ---																			
		DRAWN BY: GLLI CHECKED BY: XQZHANG APPROVED BY:	DATE: 2012/01/18 DATE: 2012/01/18 DATE:	TITLE 1.27MM HIGH SPEED SERIAL PLUG VERTICAL TYPE																	
		MATERIAL NO. SEE CHART IN SHEET 2	DOCUMENT NO. SD-67491-002	MOLEX INCORPORATED																	
		DRAFT WHERE APPLICABLE MUST REMAIN WITHIN DIMENSIONS	SIZE A3	THIS DRAWING CONTAINS INFORMATION THAT IS PROPRIETARY TO MOLEX INCORPORATED AND SHOULD NOT BE USED WITHOUT WRITTEN PERMISSION																	

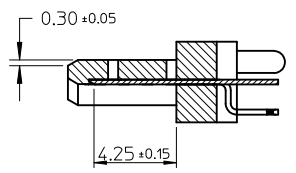
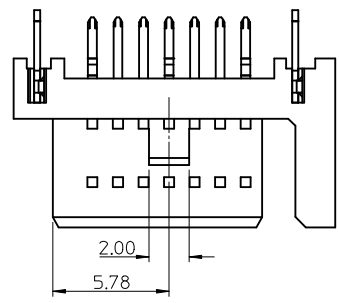
10	9	8	7	6	5	4	3	2	1
P/N	SUB-ASSEMBLY	CONTACT PLATING TYPE	DIM'A'	DIM'B'	PCB THICKNESS	COLOR	PLASTIC TYPE	SOLDER TAIL PLATING	
67491-1030	67599-0005	GOLD FLASH	2.05	2.40	1.60	BLACK	THERMAL PLASTIC	PURE TIN	
67491-1031	67599-0006	0.76 MICRON GOLD PLATED							
67491-1032	67599-0007	0.38 MICRON GOLD PLATED							
67491-1038	67599-0005	GOLD FLASH	3.00	3.20	2.40				
67491-1039	67599-0006	0.76 MICRON GOLD PLATED							
67491-1040	67599-0007	0.38 MICRON GOLD PLATED							
67491-2031	67599-0206	0.76 MICRON GOLD PLATED	2.05	2.40	1.60	PANTONE NO.293C ΔE<2			
67491-2032	67599-0207	0.38 MICRON GOLD PLATED							
67491-2035	67599-0205	GOLD FLASH	2.35	2.40	2.00				
67491-2036	67599-0206	0.76 MICRON GOLD PLATED							
67491-2037	67599-0207	0.38 MICRON GOLD PLATED							
67491-2038	67599-0205	GOLD FLASH	3.00	3.20	2.40				
67491-2039	67599-0206	0.76 MICRON GOLD PLATED							
67491-2040	67599-0207	0.38 MICRON GOLD PLATED							
67491-1139	67599-0106	0.76 MICRON GOLD PLATED	3.00	3.20	2.40	BLACK	HIGH TEMPERATURE THERMAL PLASTIC		



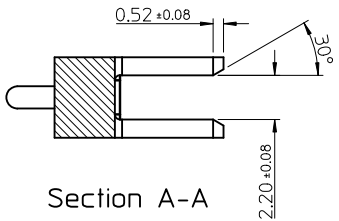
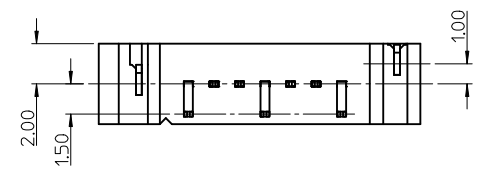
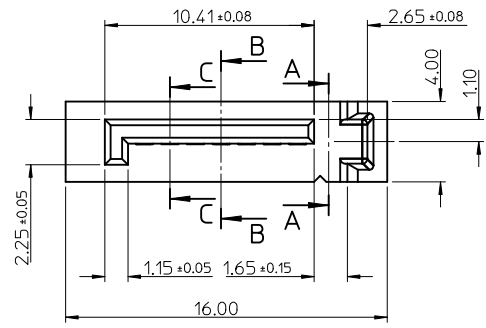
OBSOLETE PARTS EC NO: SH2012-0231 DRWNGLLI 2012/01/18 CHKD:XQZHANG 2012/01/18 APPR:AYIN 2012/01/20	DESCRIPTION REV	QUALITY SYMBOLS	GENERAL TOLERANCES (UNLESS SPECIFIED)	DIMENSION STYLE	SCALE	DESIGN UNITS	THIRD ANGLE PROJECTION															
		$F_A=0$ $F_G=0$ $F_P=0$	<table border="1"> <tr> <th></th> <th>mm</th> <th>INCH</th> </tr> <tr> <td>4 PLACES</td> <td>± ---</td> <td>± ---</td> </tr> <tr> <td>3 PLACES</td> <td>± ---</td> <td>± ---</td> </tr> <tr> <td>2 PLACES</td> <td>± 0.15</td> <td>± ---</td> </tr> <tr> <td>1 PLACE</td> <td>± 0.25</td> <td>± ---</td> </tr> </table>		mm	INCH	4 PLACES	± ---	± ---	3 PLACES	± ---	± ---	2 PLACES	± 0.15	± ---	1 PLACE	± 0.25	± ---	MM ONLY	4:1	METRIC	
			mm	INCH																		
		4 PLACES	± ---	± ---																		
3 PLACES	± ---	± ---																				
2 PLACES	± 0.15	± ---																				
1 PLACE	± 0.25	± ---																				
	<table border="1"> <tr> <th>DRAWN BY</th> <th>DATE</th> <th>TITLE</th> </tr> <tr> <td>GLL I</td> <td>2012/01/18</td> <td rowspan="3">1.27MM HIGH SPEED SERIAL PLUG VERTICAL TYPE</td> </tr> <tr> <th>CHECKED BY</th> <th>DATE</th> </tr> <tr> <td>XQZHANG</td> <td>2012/01/18</td> </tr> </table>	DRAWN BY	DATE	TITLE	GLL I	2012/01/18	1.27MM HIGH SPEED SERIAL PLUG VERTICAL TYPE	CHECKED BY	DATE	XQZHANG	2012/01/18											
DRAWN BY	DATE	TITLE																				
GLL I	2012/01/18	1.27MM HIGH SPEED SERIAL PLUG VERTICAL TYPE																				
CHECKED BY	DATE																					
XQZHANG	2012/01/18																					
	DRAFT WHERE APPLICABLE MUST REMAIN WITHIN DIMENSIONS	MATERIAL NO. SEE CHART	DOCUMENT NO. SD-67491-002	SHEET NO. 2 OF 2																		



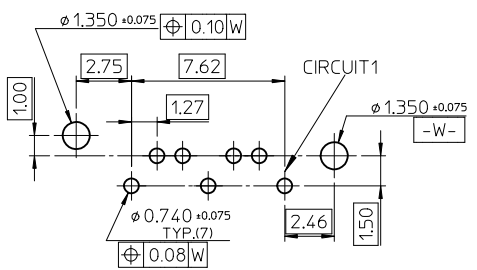
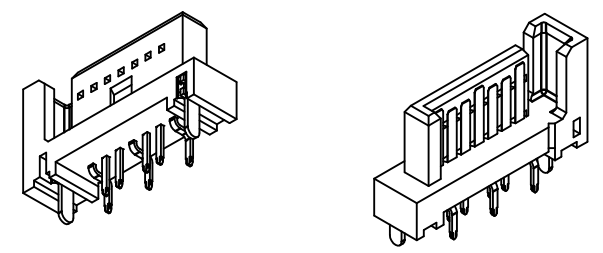
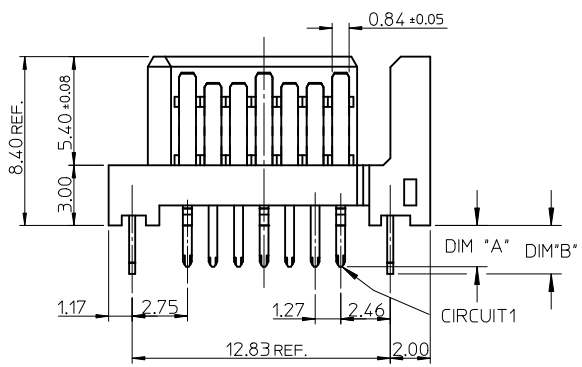
Section B-B



Section C-C



Section A-A



RECOMMENDED P.C.B. LAYOUT t=1.6mm OR 2.0mm

- NOTES:
- MATERIAL:
 - HOUSING: SEE TABLE, UL94V-0, COLOR: BLACK OR BULE (SEE P/N TABLE)
 - TERMINAL/PEG: COPPER ALLOY
 - TERMINAL PLATING :
 - CONTACT AREA: GOLD PLATED
 - SOLDER TAIL: 1.27 MICRON MIN. TIN PLATED
 - UNDER PLATE: 1.27 MICRON MIN. NICKEL PLATED
 - PEG PLATING:
 - 1.27 MICRON MIN. TIN PLATED
 - OVERALL 1.27 MICRON MIN. NICKEL UNDER PLATED
 - PACKAGING SPECIFICATION REFER TO PK-67491-001
 - PRODUCT SPECIFICATION REFER TO PS-67491-001
 - MATING PART: 67489
 - RECOMMENDED PROCESS: WAVE SOLDERING
 - PRODUCT COMPLIANT TO RoHS DIRECTIVE 2002/95/EC AND ELV DIRECTIVE 2000/53/EC*

OBSELETE PARTS EC NO: SH2011-0104 DRWING:LL1 CHKD: APPR:RZHANG 2010/10/22 2010/11/03	QUALITY SYMBOLS $F_A=0$ $F_G=0$ $F_P=0$	GENERAL TOLERANCES (UNLESS SPECIFIED) mm INCH 4 PLACES ± --- ± --- 3 PLACES ± --- ± --- 2 PLACES ± 0.15 ± --- 1 PLACE ± 0.25 ± --- ANGULAR ± 3 °	DIMENSION STYLE MM ONLY	SCALE 4:1	DESIGN UNITS METRIC	THIRD ANGLE PROJECTION	
	DRAWN BY: RICHARD CHECKED BY: VINCENT APPROVED BY: RZHANG MATERIAL NO.	DATE: '01/06/21 DATE: '01/06/21 DATE: 2010/11/03	TITLE 1.27MM HIGH SPEED SERIAL PLUG SERIAL TYPE	MOLEX INCORPORATED	DOCUMENT NO. SD-67491-002	SHEET NO. 1 OF 2	SEE CHART IN SHEET 2
	DRAFT WHERE APPLICABLE MUST REMAIN WITHIN DIMENSIONS	SIZE A3	THIS DRAWING CONTAINS INFORMATION THAT IS PROPRIETARY TO MOLEX INCORPORATED AND SHOULD NOT BE USED WITHOUT WRITTEN PERMISSION				
	OBSOLETE PARTS						

	10	9	8	7	6	5	4	3	2	1						
	P/N	CONTACT PLATING TYPE	"A"	"B"	PCB THICKNESS	SOLDERING PLATE	COLOR	PLASTIC TYPE								
F	67491-1030	GOLD FLASH	2.05	2.40	1.60	PURE TIN	BLACK	THERMAL PLASTIC								
	67491-1031	0.76 MICRON GOLD PLATED														
	67491-1032	0.38 MICRON GOLD PLATED														
	67491-1035	GOLD FLASH	2.35	2.40	2.00											
	67491-1036	0.76 MICRON GOLD PLATED														
	67491-1037	0.38 MICRON GOLD PLATED														
E	67491-1038	GOLD FLASH	3.00	3.20	2.40		PURE TIN		BLACK	THERMAL PLASTIC						
	67491-1039	0.76 MICRON GOLD PLATED														
	67491-1040	0.38 MICRON GOLD PLATED														
	D	67491-2031	0.76 MICRON GOLD PLATED	2.05	2.40						1.60	PURE TIN	BLUE PENTONE NO.293C ΔE<3	THERMAL PLASTIC		
		67491-2032	0.38 MICRON GOLD PLATED													
		67491-2035	GOLD FLASH													
D	67491-2036	0.76 MICRON GOLD PLATED	2.35	2.40	2.00	PURE TIN	BLUE PENTONE NO.293C ΔE<3	THERMAL PLASTIC								
	67491-2037	0.38 MICRON GOLD PLATED														
	67491-2038	GOLD FLASH														
C	67491-2039	0.76 MICRON GOLD PLATED	3.00	3.20	2.40				PURE TIN	BLACK	HIGH TEMPERATURE THERMAL PLASTIC					
	67491-2040	0.38 MICRON GOLD PLATED														
	67491-1130	GOLD FLASH										2.05	2.40	1.60		
	67491-1131	0.76 MICRON GOLD PLATED														
	67491-1132	0.38 MICRON GOLD PLATED														
	C	67491-1135	GOLD FLASH	2.35	2.40	2.00	PURE TIN	BLACK				HIGH TEMPERATURE THERMAL PLASTIC				
67491-1136		0.76 MICRON GOLD PLATED														
67491-1137		0.38 MICRON GOLD PLATED														
67491-1138		GOLD FLASH														
B	67491-1139	0.76 MICRON GOLD PLATED	3.00	3.20	2.40	PURE TIN			BLACK	HIGH TEMPERATURE THERMAL PLASTIC						
	67491-1140	0.38 MICRON GOLD PLATED														

B									
---	--	--	--	--	--	--	--	--	--

A	OBSOLETE PARTS EC NO: SH2011-0104 G DRWG:LLI 2010/10/22 CHKD: APPR:RZHANG 2010/11/03 REV	QUALITY SYMBOLS	GENERAL TOLERANCES (UNLESS SPECIFIED)	DIMENSION STYLE	SCALE	DESIGN UNITS	THIRD ANGLE PROJECTION	TITLE			
		▽ _A =0	mm INCH	MM ONLY	4:1	METRIC	☉	1.27MM HIGH SPEED SERIAL PLUG VERTICAL TYPE			
		▽ _G =0	4 PLACES ± --- ± ---	DRAWN BY DATE	RICHARD '01/06/21	MOLEX INCORPORATED			DOCUMENT NO.		SHEET NO.
		▽ _F =0	3 PLACES ± --- ± ---	CHECKED BY DATE	VINCENT '01/06/21	SD-67491-002		2 OF 2			
		2 PLACES ± 0.15 ± ---	1 PLACE ± 0.25 ± ---	APPROVED BY DATE	THIS DRAWING CONTAINS INFORMATION THAT IS PROPRIETARY TO MOLEX INCORPORATED AND SHOULD NOT BE USED WITHOUT WRITTEN PERMISSION						
		ANGULAR ± 3 °	DRAFT WHERE APPLICABLE MUST REMAIN WITHIN DIMENSIONS	SEE CHART							