

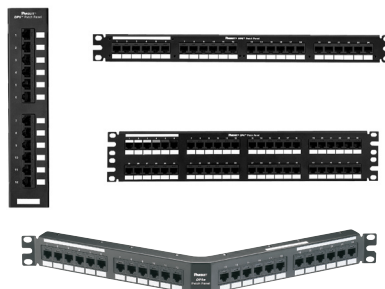
# NetKey® Category 6 Punchdown Patch Panels

# PANDUIT®

DATA SHEET

## specifications

Category 6/Class E punchdown patch panels shall terminate unshielded twisted 4-pair, 22 – 26 AWG, 100 ohm cable and mount to standard EIA 19" or 23" racks. Punchdown tool shall properly terminate each conductor for optimum performance. Universal T568A and T568B color-coded wiring schemes included.



## technical information

<b>Category 6/Class E performance:</b>	Exceeds ANSI/TIA-568-C.2 Category 6 and ISO 11801 Class E channel requirements at swept frequencies up to 250 MHz Meets ANSI/TIA-568-C.2 and ISO 11801 Category 6 component requirements at swept frequencies up to 250 MHz
<b>FCC compliance:</b>	Complies with ANSI/TIA-1096A (formerly FCC Part 68); contacts plated with 50 microinches of gold
<b>IEC compliance:</b>	Meets IEC 60603-7
<b>PoE compliance:</b>	Supports IEEE 802.3af/802.3at and proposed 802.3bt type 3 and type 4 PoE applications
<b>UL rated:</b>	UL 1863 approved
<b>RoHS compliance:</b>	Compliant
<b>Mounting options:</b>	Mounts to standard EIA 19" or 23" racks (23" requires use of extender brackets); 12-port suitable for wall mount with 89D bracket

## key features and benefits

<b>100% performance tested</b>	Confidence that each port delivers specified performance
<b>110 style punchdown termination</b>	Utilizes industry standard termination style and includes wire retention cap
<b>Identification</b>	Write-on areas allow for port and panel identification
<b>Industry standard RJ45 interface</b>	Familiar to end-users; backwards compatible
<b>Angled design (optional)</b>	Facilitates proper bend radius control and minimizes the need for horizontal cable managers

## applications

Applications include:

- Ethernet 10BASE-T, 100BASE-T (Fast Ethernet), and 1000BASE-T (Gigabit Ethernet)
- 155 Mb/s ATM, 622 Mb/s ATM, 1.2 Gb/s ATM
- Token Ring 4/16
- Voice over Internet Protocol (VoIP)

### NetKey® Network Components

#### NetKey® Category 6 Angled Punchdown Patch Panels

**24-port, 1 RU:** NKA6PPG24Y  
**48-port, 2 RU:** NKA6PPG48Y

#### NetKey® Category 6 Flat Punchdown Patch Panels

**12-port:** NK6PPG12WY  
**24-port, 1 RU:** NK6PPG24Y  
**48-port, 2 RU:** NK6PPG48Y

#### NetKey® Category 6 Molded Punchdown Patch Panels

**24-port, 1 RU:** NK6PP24P  
**48-port, 2 RU:** NK6PP48P

#### NetKey® Category 6 Patch Cords

**Foot lengths:** NK6PC3\*\*Y  
**Meter lengths:** NK6PC1M^Y

#### Termination Tools

**Punchdown tool:** PDT110‡  
**Snipping tool:** CWST  
**Stripping tool:** CJUST

\*To designate a color, add suffix IW (Off White), EI (Electric Ivory), IG (Int'l Gray), WH (White), BL (Black), OR (Orange), RD (Red), BU (Blue), GR (Green) or YL (Yellow).

\*\*For standard lengths other than 3 feet (5, 7, 10, 14 or 20) change the length designation in part number to the desired length. For standard cable colors other than Off White, add suffix BU (Blue), GR (Green), RD (Red) or YL (Yellow) before the Y at the end of the part number. For example, the part number for a blue 5 foot patch cord is NK6PC5BUY.

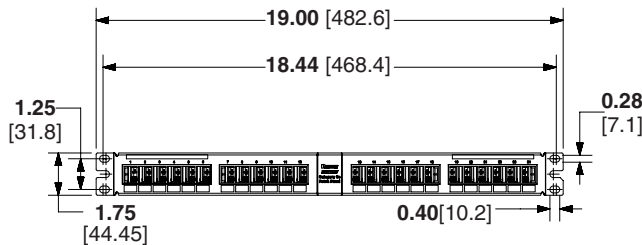
^For standard lengths other than 1 meter (2, 3, 4 or 5) change the length designation in part number to the desired length. For standard cable colors other than Off White, add suffix BU (Blue), GR (Green), RD (Red) or YL (Yellow) before the Y at the end of the part number. For example, the part number for a blue 5 meter patch cord is NK6PC5MBUY.

‡Terminates the NetKey® Keystone Punchdown Jack Module and NetKey® Punchdown Patch Panels.

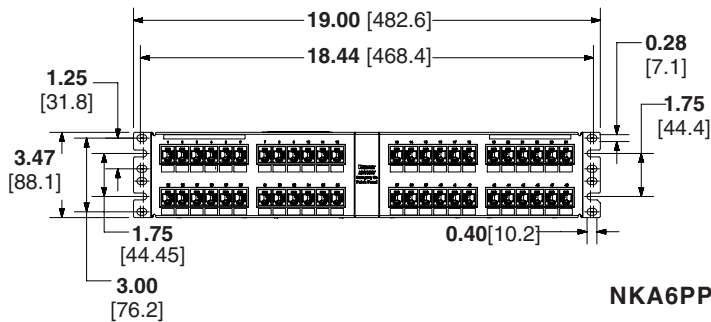
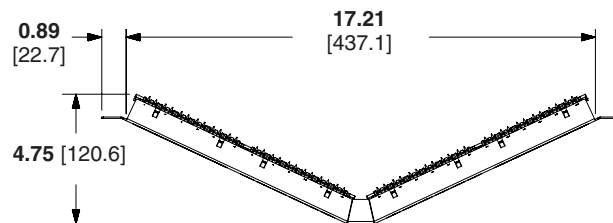
# NetKey® Category 6 Punchdown Patch Panels

## NetKey® Category 6 Electrical Performance

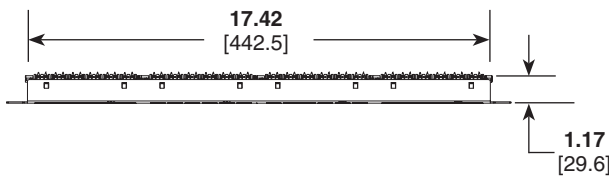
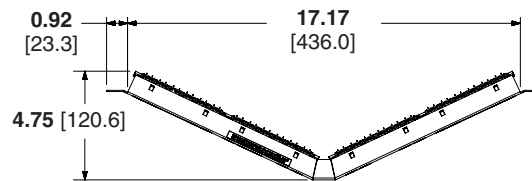
Parameters	dB @ 250 MHz
NEXT	> 46.0
FEXT	> 35.1
Attenuation	> 0.32
Return Loss	> 16.0
LCL	> 20.0



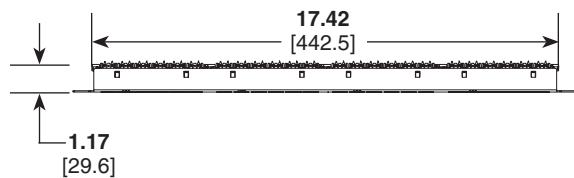
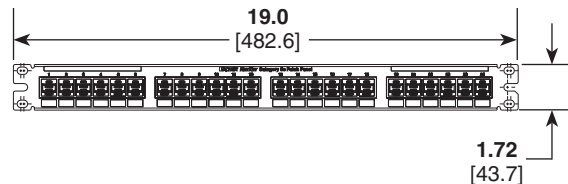
NKA6PPG24Y



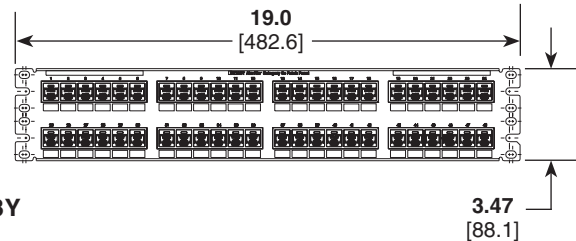
NKA6PPG48Y



NK6PPG24Y



NK6PPG48Y



Dimensions are in inches [Dimensions in brackets are metric]

### WORLDWIDE SUBSIDIARIES AND SALES OFFICES

PANDUIT CANADA  
Markham, Ontario  
cs-cdn@panduit.com  
Phone: 800.777.3300

PANDUIT EUROPE LTD.  
London, UK  
cs-emea@panduit.com  
Phone: 44.20.8601.7200

PANDUIT SINGAPORE PTE. LTD.  
Republic of Singapore  
cs-ap@panduit.com  
Phone: 65.6305.7575

PANDUIT JAPAN  
Tokyo, Japan  
cs-japan@panduit.com  
Phone: 81.3.6863.6000

PANDUIT LATIN AMERICA  
Guadalajara, Mexico  
cs-la@panduit.com  
Phone: 52.33.3777.6000

PANDUIT AUSTRALIA PTY. LTD.  
Victoria, Australia  
cs-aus@panduit.com  
Phone: 61.3.9794.9020

For a copy of Panduit product warranties, log on to [www.panduit.com/warranty](http://www.panduit.com/warranty)

For more information

Visit us at [www.panduit.com](http://www.panduit.com)

Contact Customer Service by email: [cs@panduit.com](mailto:cs@panduit.com)  
or by phone: 800.777.3300

**PANDUIT**®

©2015 Panduit Corp.  
ALL RIGHTS RESERVED.  
NKDS43--WW-ENG  
5/2015