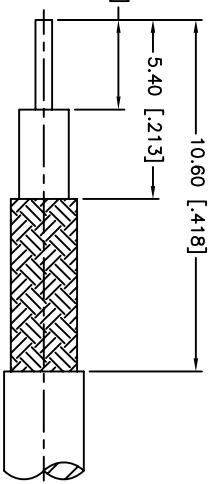
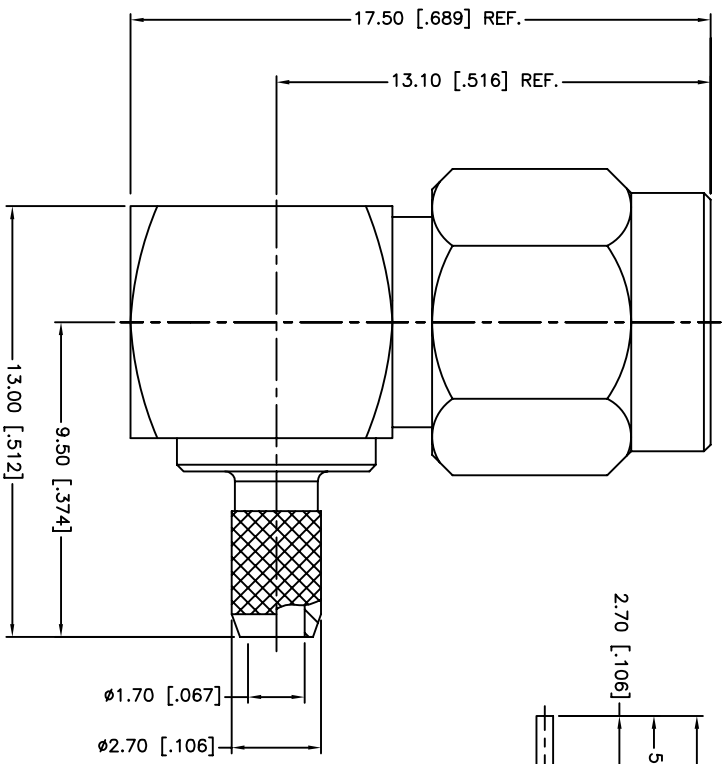
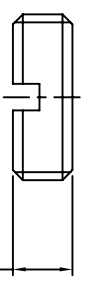
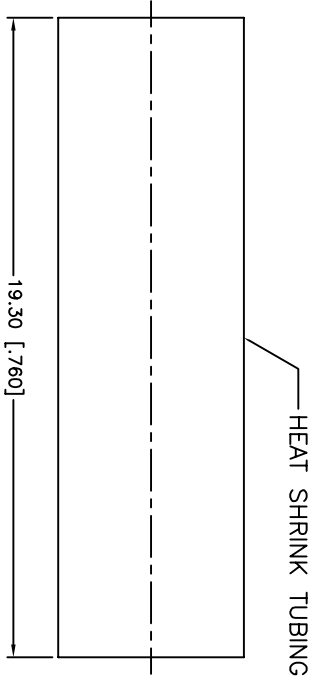
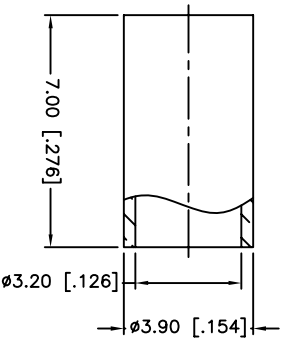


REV.	DATE	ECR NO.	DESCRIPTION
NC	04/17/00	-	INITIAL RELEASE
A	07/21/05	-	UPDATE DRAWING FORMAT
B	04/28/08	-	REVISE BARREL O.D. TO 2.69 mm, FERRULE I.D. TO 3.2 mm
C	02/25/10	2027	THE FERRULE LENGTH WAS CHANGED TO 7 FROM 9.5.



RECOMMENDED
CABLE STRIPPING DIM'S



1.80 [.071]

- NOTES:
1. CRIMPED FERRULE
HEX CRIMP SIZE .128"
 2. CONTACT PIN TO SOLDER

QTY	DESCRIPTION	MATERIAL	FINISH
1	HEAT SHRINK TUBING	BRASS	BLACK
1	FERRULE	BRASS	GOLD
1	COVER	BRASS	GOLD
1	GASKET	SILICONE	RED
1	RETAINER RING	SUS 304	NATURAL
1	CONTACT PIN	BERYLLIUM COPPER	GOLD
1	INSULATOR	PTFE	NATURAL
1	HOUSING WITH BARREL	BRASS	GOLD
1	SHELL	BRASS	GOLD

APPROVALS	DATE
C.WANG	02/25/10

CAD FILE	DWG. NO.	REV.	SIZE	SCALE
C:/CONNEX/132123RP.DWG	132123RP.DWG	C	A	NA

UNLESS OTHERWISE SPECIFIED, DIMENSIONS ARE IN INCHES AND FOR CUSTOMER REFERENCE ONLY.
UNLESS OTHERWISE SPECIFIED, TOLERANCES FOR MILLIMETERS ARE: 0.5 - 8mm ± 0.20mm 8 - 30mm ± 0.40mm 30 - 120mm ± 0.50mm
UNLESS OTHERWISE SPECIFIED, TOLERANCES FOR INCHES ARE: .020 - .315 = ± 0.007" .315 - 1.180 = ± 0.015" 1.180 - 4.724 = ± 0.020"

PART DESCRIPTION	PART NO.
SMA REVERSE POLARITY R/A CRIMP PLUG (FOR RG-174/U,188A/U,316/U)	132123RP

Amphenol Connex