

REV. R

NOTE:  
THESE VIEWS ARE FOR PLUG ORIENTATION.

UNLESS OTHERWISE NOTED  
DIMENSIONS ARE IN INCHES TOLERANCES ARE:  
ONE PLACE DECIMALS ± .1[.25] THREE PLACE DECIMALS ± .005[.127]  
TWO PLACE DECIMALS ± .01[.25] FOUR PLACE DECIMALS ± .0020[.051] ANGLES ± 2°

TITLE:  
2MM SOCKET  
STRIP ASSEMBLY

DWG NO:  
YTQ-1XX-XX-XX-X-XXX-XXX  
SHEET 2 OF 2

PACKAGING

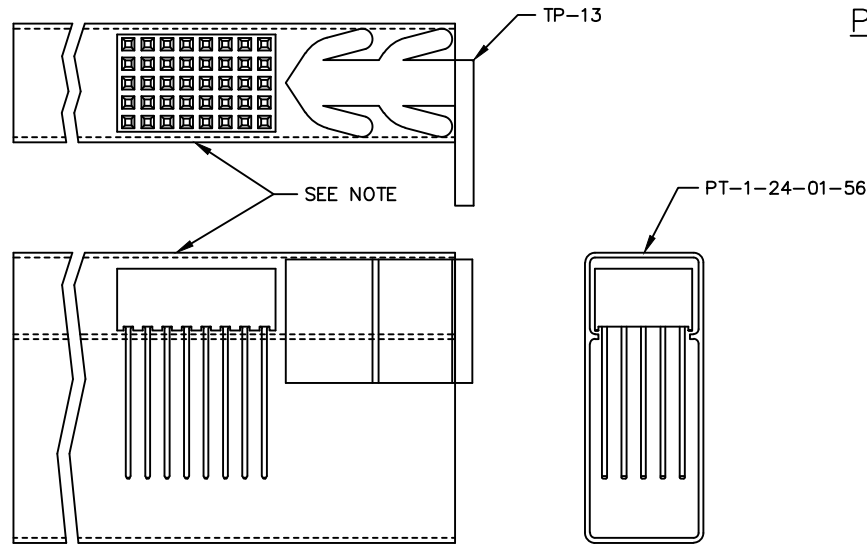


TABLE 2

ROW SPEC.	NO. OF POS.	PKG TUBE	TUBE PLUG
-01-Q	15-50	PT-1-24-15-29	TP-03
-02-Q	15-50	PT-1-24-02-51	TP-13
-03-Q	15-50	PT-1-24-16-29	TP-07
-01-5	15-50	PT-1-24-01-70	TP-07
-02-5	15-50	PT-1-24-01-56	TP-31
-03-5	15-50	PT-1-24-01-08	TP-13
-01-6	15-50	PT-1-24-01-52	TP-07
-02-6	15-50	PT-1-24-02-74	TP-07
-03-6	15-50	PT-1-24-01-08	TP-13
ALL STYLES	-02 THRU -14	LAYER PACKAGING	

NOT ENGINEERING APPROVED

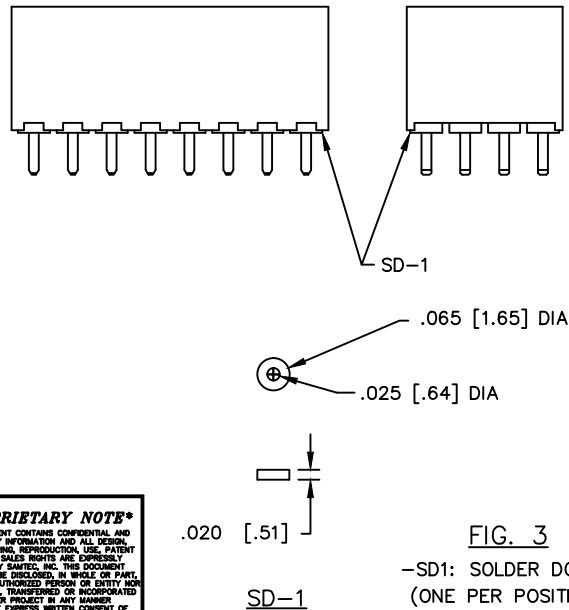
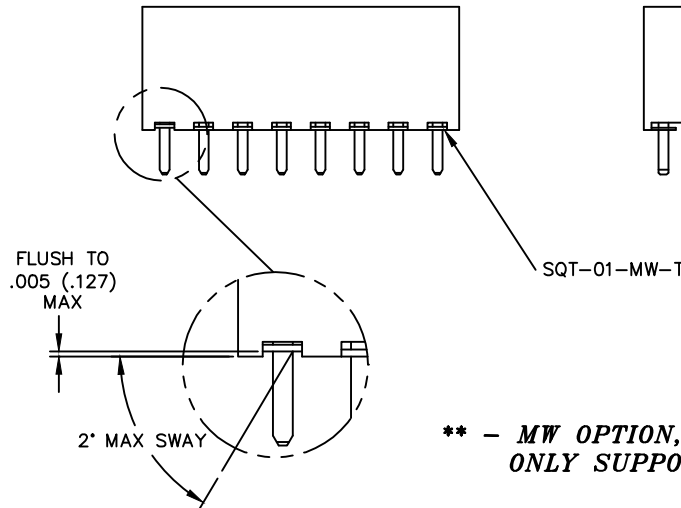


FIG. 3

-SD1: SOLDER DONUT  
(ONE PER POSITION)

**\*PROPRIETARY NOTE\***  
THIS DOCUMENT CONTAINS CONFIDENTIAL AND PROPRIETARY INFORMATION AND ALL DESIGN, MANUFACTURING, REPRODUCTION, USE, PATENT RIGHTS AND SALES RIGHTS ARE EXPRESSLY RESERVED BY SAMTEC, INC. THIS DOCUMENT SHALL NOT BE DISCLOSED, IN WHOLE OR PART, TO ANY UNAUTHORIZED PERSON OR ENTITY NOR REPRODUCED, TRANSFERRED OR INCORPORATED IN ANY OTHER PROJECT IN ANY MANNER WITHOUT THE EXPRESS WRITTEN CONSENT OF SAMTEC, INC.



**\*\* - MW OPTION, DO NOT DESIGN IN. SAMTEC WILL ONLY SUPPORT EXISTING BUSINESS 2/11/02.**

FIG. 4

\*\* -MW: METAL WASHER  
(ONE PER POSITION)  
(AVAILABLE ON LEAD STYLES  
-01 & -03 ONLY)  
(5 POS MIN)  
(30 POS MAX)

PLOT SCALE: 1=2

EXISPROD\ASSEMBLY\2MM  
YTQ-ASM2

**samtec**

520 PARK EAST BLVD. NEW ALBANY, INDIANA 47150  
PHONE (812) 944-6733 P.O. BOX 1147  
CODE 55322

MADE BY: BRATCHER 1-26-99

YTQ-1XX-XX-XX-X-XXX-XXX  
SHEET 2 OF 2