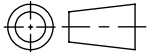
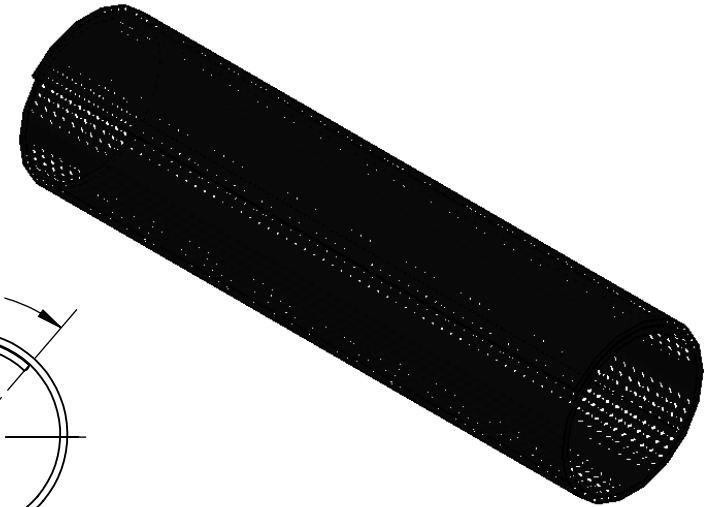
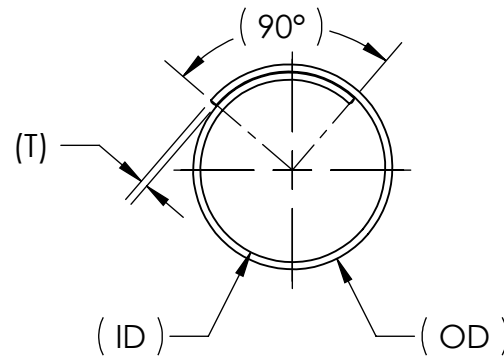
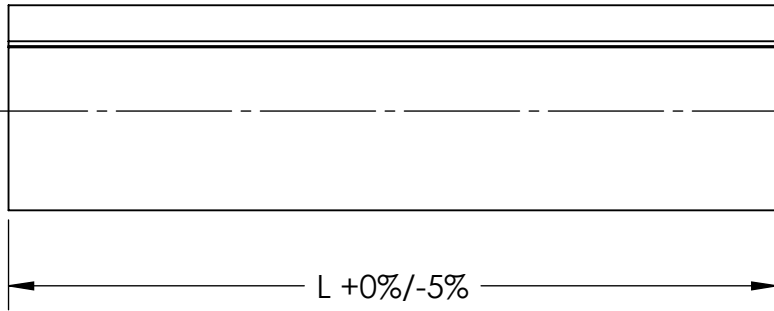


SW2010



Revision level		Revision Record	Changed	Date	Approved	Date
Drawing	Part					
01	-	SEE ECN# 011861	AAC	02/03/2012	KAC	02/07/2012



NOMINAL SIZE	TYPE	(OD)	(ID)	L (FT)	BULK L (FT)	LARGE BULK L (FT)	(T)
1/8	BSPSW18	.173	.125	-	400	10000	.024
1/4	BSPSW14	.30	.25	100	200	3000	.025
1/2	BSPSW12	.55	.50	75	150	1200	.025
3/4	BSPSW34	.80	.75	50	100	500	.025
1	BSPSW10	1.075	1.00	50	100	400	.038
1 1/4	BSPSW114	1.325	1.25	-	75	300	.038
1 1/2	BSPSW112	1.575	1.50	-	75	200	.038
2	BSPSW20	2.075	2.00	-	50	150	.038

Material  
PET

Units inches  
 Dimension without tolerances details to:  
 .xxxx = ±.0005  
 .xxx = ±.005  
 .xx = ±.01  
 .x = ±.03  
 None = ±.06  
 ∠ = ±0.5°

The copyright of this drawing is reserved by HellermannTyton. It is issued on condition that it is not reproduced, copied, or disclosed to a third party, either wholly or in part, without the consent of HellermannTyton.

Drawn AAC 05/31/2011  
 Approved  
**HellermannTyton**  
 North America  
 Email: corp@htamericas.com  
 Web: www.hellermann.tyton.com

Article/Type-No BSPSW  
 Title PET SPLIT BRAIDED SLEEVING  
 Drawing-No 11-0337-006-CSU  
 Production : Phase

Scale 1:1  
 Project Number PRP11-0337  
 Format AH  
 Sheet 1/1