

4

3

2

1

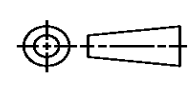
THIS DRAWING IS UNPUBLISHED. RELEASED FOR PUBLICATION  
 © COPYRIGHT ALL RIGHTS RESERVED.

LOC	DIST	REVISIONS			
P	LTR	DESCRIPTION	DATE	DWN	APVD
	D1	ECR-16-009823	18JUL2016	GK	SD

# REPLACED BY OCEAN STYLE APPLICATOR PART NUMBER 2836146-1

FOR REPLACEMENT PARTS FOR APPLICATOR 1385377  
 REFER TO ADDITIONAL PAGE(S). SPARE PARTS KIT (IF LISTED)  
 WILL REMAIN AVAILABLE.

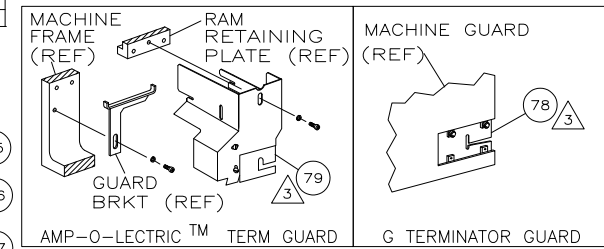
THE REPLACEMENT OCEAN STYLE APPLICATOR HAS THE  
 SAME TERMINATOR/PRESS INTERFACE AS APPLICATOR  
 1385377

THIS DRAWING IS A CONTROLLED DOCUMENT.		DWN	GOPALAKRISHNA HV		
DIMENSIONS:		CHK	GOPALAKRISHNA HV		
		TOLERANCES UNLESS OTHERWISE SPECIFIED:		APVD	
		0 PLC ± 1 PLC ± 2 PLC ± 3 PLC ± 4 PLC ± ANGLES ±		STOUGH DALE	
MATERIAL		PRODUCT SPEC		NAME	
FINISH		APPLICATION SPEC		SIDE FEED HDM APPLICATOR	
		WEIGHT	SIZE	CAGE CODE	DRAWING NO
			A3		©- 1385377
		CUSTOMER DRAWING		RESTRICTED TO	
		SCALE	SHEET	1 OF 2	REV D1



THIS DRAWING IS UNPUBLISHED. RELEASED FOR PUBLICATION  
 © COPYRIGHT BY TYCO ELECTRONICS CORPORATION. ALL RIGHTS RESERVED.

PART NUMBER	REV	FIRST USED
1385377-1	D	122500-1
1385377-2	D	565435-5
1385377-3	D	354500-1

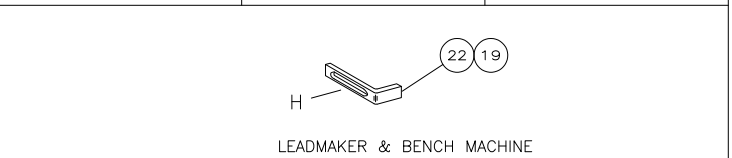
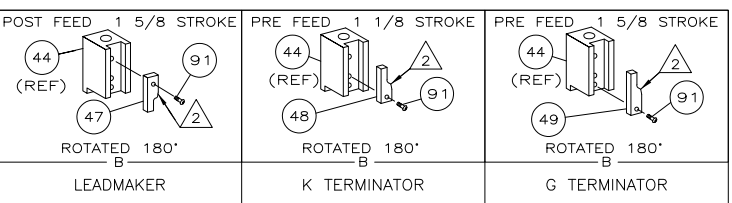
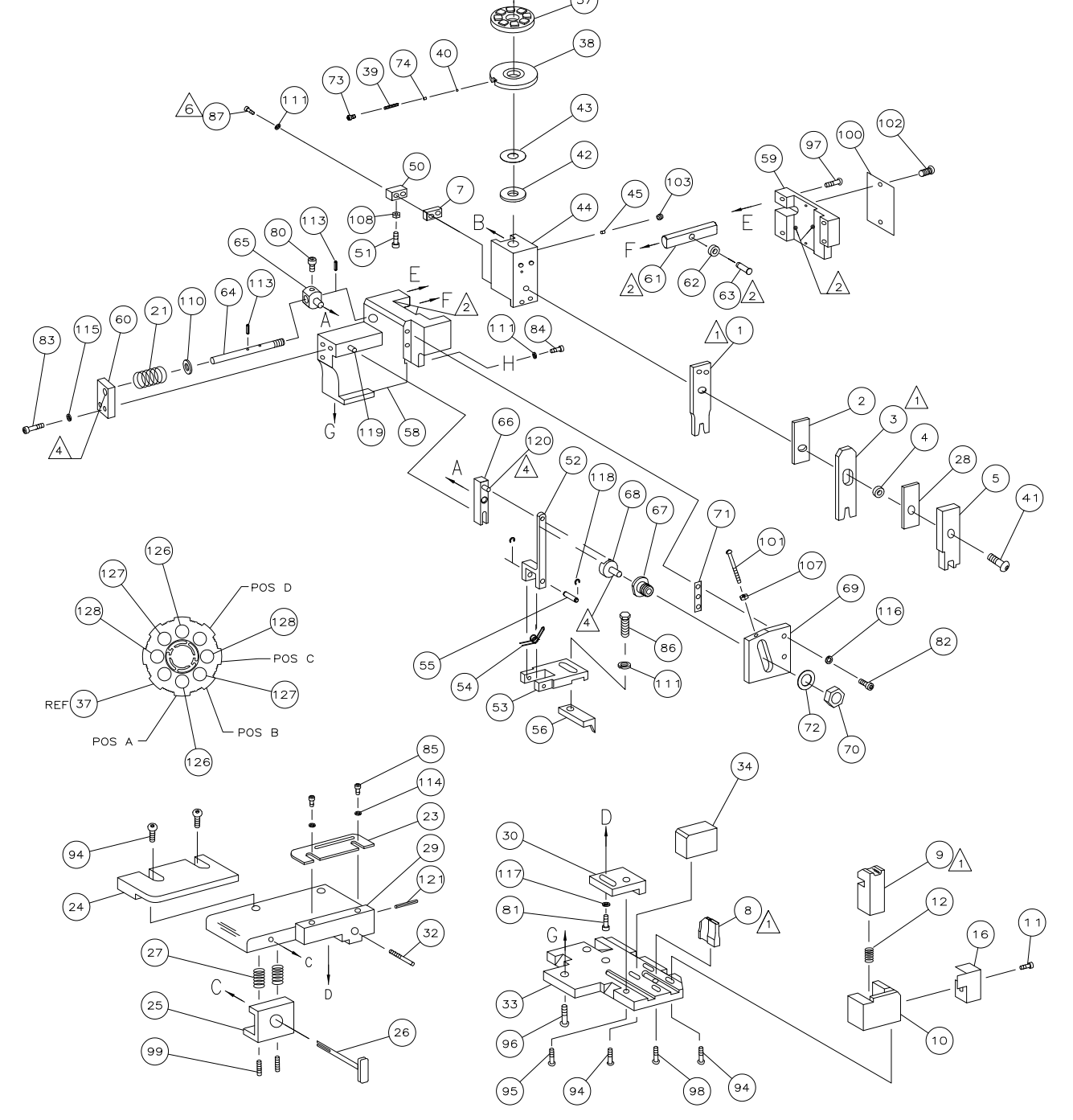


TERMINAL NAME: PLUG CONTACT, CRIMP SNAP, 26-30 AWG, MICRO MATE-N-LOK

PAD LTR	AMP TERMINAL AMP CRIMP SPECS				
	CRIMP HEIGHT	WIRE SIZE			
A	.022 ±.002 [0.56 ±0.05mm]	26			
B	.021 ±.002 [0.53 ±0.05mm]	28			
C	.020 ±.002 [0.51 ±0.05mm]	30			
D	NOT	USED			
CRIMP	SIZE	TYPE	RANGE		
	WIRE .042 [1.07mm]	F	30-26		
INSUL .070 [1.78mm]	F	0.89-1.52mm			
WIRE STRIP LENGTH	TERM APPL SPEC	FEED	APPL INSTRUCTION	SET UP GAGE	LAYOUT
.114-.131	114-13000	.250	408-8040	458637-1	L2624

LOC	DIST	REVISIONS			
P	LR	DESCRIPTION	DATE	DWN	APD
A	66		10-2007	MY	GB
D		ECR-07-023678			

REV	BY	DESCRIPTION
-1	LEADMAKER	MECH POST FEED
-2	BENCH MODEL K	MECH PRE FEED
-3	BENCH MODEL G	MECH PRE FEED



- 1 RECOMMENDED SPARE PARTS.
- 2 GREASE LIGHTLY.
- 3 GUARD MUST BE IN PLACE WHEN OPERATING APPLICATOR IN A BENCH MACHINE.
- 4 LUBRICATE DAILY USING NO. 20 MACHINE OIL.
- 5. ITEMS WITH QTY OF REF SPECIFIED (EXCEPT ITEMS 78 AND 79) ARE USED ON ITEM 46.
- 6 CUT TO LENGTH AT ASSEMBLY

QTY REQD PER ASSY	PART NO	DESCRIPTION	ITEM NO
129			
2	2	2 - 6-354779-8 PIN, WIRE DISC (.3330)C	128
2	2	2 - 6-354779-7 PIN, WIRE DISC (.3325)B	127
2	2	2 - 6-354779-6 PIN, WIRE DISC (.3320)A	126
1	1	1 - 986950-1 WASHER, FLAT PRECISION	125
1	1	1 - 217238-1 GENERAL INSTRUCTION PACKAGE	124
1	1	1 - 4088040 SF APPL INST 408-8040	123
			122
1	1	1 - 4-21028-0 PIN,SLT SPR(Ø.093x.75)ST GDE PL	121
REF	REF	REF - 1-21030-1 PIN,DOWEL(Ø.187x.50)LEVER	120
REF	REF	REF - 1-21030-6 PIN,DOWEL(Ø.187x1.25)HOUSING	119
REF	REF	REF - 21045-3 RING,RET "C"(Ø.187)FD FING PIN	118
1	1	1 - 21024-5 WASHER, LOCK(#10)ADJ BLOCK	117
REF	REF	REF - 21024-5 WASHER,LOCK(#10)ADJ PLATE	116
REF	REF	REF - 21024-5 WASHER,LOCK(#10)FEED GDE ROD	115
2	2	2 - 21024-2 WASHER,LOCK(#4)FRONT STP GUIDE	114
REF	REF	REF - 5-21028-1 PIN,SLT SPR(Ø.125x.50)ADJ ROD	113
			112
4	4	4 - 21024-4 WASHER,LOCK(#8)STRIPPER	111
REF	REF	REF - 21899-4 WASHER,FLAT(Ø5/16)SCREW ADJ	110
			109
1	1	1 - 21018-5 NUT,HEX(NO.6)HOLDDOWN	108
REF	REF	REF - 21068-5 NUT,HEX(6-32)FEED ADJ	107
			106
			105
			104
1	1	1 - 21009-2 SCR,SKT SET(1/4-20x.25 LW)RAM	103
2	2	2 - 21017-2 SCR,DRIVE(#2x.19)ID PLATE	102
REF	REF	REF - 6-23715-5 SCR,PAN HD(6-32x1.50)FEED ADJ	101
1	1	1 - 461264-1 PLATE, IDENTIFICATION	100
2	2	2 - 5-21006-6 SCR,SET10-32x.75)DRAG	99
1	1	1 - 22733-8 SCR,BHC(8-32x.38 LW)ANVIL	98
REF	REF	REF - 2-21002-9 SCR,BHC(10-32x.75)CAP	97
REF	REF	REF - 2-22733-8 SCR,BHC(1/4-20x.62)HOUSING	96
REF	REF	REF - 2-21002-7 SCR,BHC(10-32x.50)SG ADJ BLOCK	95
6	6	6 - 2-21002-2 SCR,BHC(8-32x.50)TERM H DWN	94
			93
			92
1	1	1 - 1-21002-7 SCR,BHC(6-32x.38)CAM	91
			90
			89
			88
2	2	2 - 2-21000-8 SCR,SHC(8-32x.62)DEP-HOLD	87
1	1	1 - 2-22603-0 SCR,HEX HD(8-32x.31)FEED FINGER	86
2	2	2 - 1-21000-3 SCR,SHC(4-40x.25)FR ST GUIDE	85
1	1	1 - 2-21000-7 SCR,SHC(8-32x.50)STRIPPER	84
REF	REF	REF - 3-21000-7 SCR,SHC(10-32x.75)FEED ROD GD	83
REF	REF	REF - 3-21000-6 SCR,SHC(10-32x.62)FD ADJ BLK	82
1	1	1 - 7-21000-6 SCR,SHC(10-32x.31)SG ADJ BL	81
REF	REF	REF - 3-21000-4 SCR,SHC(10-32x.38)PIVOT BLK	80
-	REF	- 455749-1 GUARD, WINDOW	79
REF	-	- 679532-1 INSERT, GUARD	78
			77
			76
			75
1	1	1 - 690603-1 SPRING, ASSIST	74
1	1	1 - 23030-1 SCR,SHC(6-32x.25 SL)INS DISC	73
REF	REF	REF - 458109-1 WASHER, SPECIAL	72
REF	REF	REF - 690517-1 SPACER	71
-3	-2	-1 U/M	

QTY REQD PER ASSY	PART NO	DESCRIPTION	ITEM NO
			70
			69
			68
			67
			66
			65
			64
			63
			62
			61
			60
			59
			58
			57
1	1	1 - 458537-2 PAWL, FEED	56
REF	REF	REF - 240624-1 PIN, FEED FINGER	55
REF	REF	REF - 691499-1 SPRING, FEED FINGER	54
REF	REF	REF - 690541-1 HOLDER, FEED FINGER	53
REF	REF	REF - 455679-1 LEVER, TERMINAL FEED ARM	52
1	1	1 - 811242-2 BUMPER, HOLDDOWN	51
1	1	1 - 690753-1 SPACER, TONKER	50
1	-	- 690602-6 CAM, PRE-FEED 1 5/8 ST	49
-	-	- 690602-5 CAM, PRE-FEED 1 1/8 ST	48
-	-	- 690501-4 CAM, POST-FEED 1 5/8 ST	47
1	1	1 - 459456-1 APPLICATOR, BASIC (SUBASSY)	46
1	1	1 - 690191-1 PLUG, NYLON	45
1	1	1 - 455673-1 RAM	44
1	1	1 - 690125-1 WASHER, LAMINATED	43
1	1	1 - 690124-1 WASHER, RAM	42
1	1	1 - 7-21002-9 BOLT, CRIMPER(5/16x1.00)	41
1	1	1 - 23241-6 BALL, STEEL	40
1	1	1 - 690170-1 SPRING, COMPRESSION	39
1	1	1 - 690142-1 DISC, INSULATION	38
1	1	1 - 354777-1 WIRE DISC, PLASTIC	37
1	1	1 - 22480-5 WASHER, SPRING	36
1	1	1 - 690212-1 POST, RAM	35
1	1	1 - 690786-1 SUPPORT, TERMINAL	34
REF	REF	REF - 455675-1 PLATE, BASE	33
1	1	1 - 690432-3 SCREW, ADJUSTMENT	32
			31
REF	REF	REF - 455689-1 BLOCK, STRIP GUIDE ADJ	30
1	1	1 - 455671-1 PLATE, STRIP GUIDE	29
1	1	1 - 1-455888-0 SPACER, FRONT SHEAR DEP	28
2	2	2 - 1-22284-0 SPRING, DRAG	27
1	1	1 - 690546-1 LEVER, DRAG RELEASE	26
1	1	1 - 240792-1 DRAG, TERMINAL	25
1	1	1 - 6-690504-4 GUIDE, STRIP (REAR)	24
1	1	1 - 690438-1 GUIDE, STRIP (FRONT)	23
-	-	- 690472-2 STRIPPER	22
REF	REF	REF - 4-22284-9 SPRING, FEED RETURN	21
			20
1	1	1 - 691353-1 STRIPPER	19
			18
			17
1	1	1 - 318563-1 GUARD, CHIP, FRONT	16
			15
			14
			13
1	1	1 - 3-22280-3 SPRING, SHEAR	12
1	1	1 - 690461-1 STOP, SHEAR	11
1	1	1 - 690459-1 HOLDER, SHEAR (FRONT)	10
1	1	1 - 462006-1 SHEAR, FLOAT (FRONT)	9
1	1	1 - 4-805887-6 ANVIL	8
1	1	1 - 240641-2 SPACER, DEPRESSOR (REAR)	7
			6
1	1	1 - 2-455889-0 DEPRESSOR, SHEAR (FRONT)	5
1	1	1 - 238011-6 SPACER, BLOCK CRIMPER	4
1	1	1 - 4-683453-8 CRIMPER, INSULATION	3
1	1	1 - 455888-1 SPACER, CRIMPER	2
1	1	1 - 2-456401-5 CRIMPER, WIRE	1